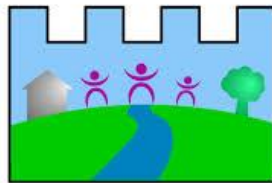


# Totnes Neighbourhood Plan

KEVICC Year 10 Students Consultation Day  
12<sup>th</sup> October 2015

## Key Findings Paper



**TOTNES**  
NEIGHBOURHOOD  
**PLAN**



Produced by the Planning for Real Unit  
(part of Accord Housing Association)

## **Totnes Neighbourhood Plan – Consultation with KEVICC Year 10 Students**

### **Key Findings Paper**

#### **Outline of the Day:**

On October 12<sup>th</sup>, 2015, Thea Platt (Totnes Neighbourhood Plan Co-ordinator) and Margaret Wilkinson (Planning for Real Unit, Accord HA) attended the King Edward VI Community College to work with Year 10 students in order to involve them in the shaping of the Totnes Neighbourhood Plan and offer them the opportunity to putting their own views forward.

105 Year 10 Students took part. These students were divided up into 4 classes, and within each class students were put into smaller working groups. The day was divided into a number of key activities in classrooms:

- Session 1: began with the Year 10 students assembled in the School Theatre where the day's activity was put into context in relation to recent classroom work (Natalie Clark, KEVICC); an explanation of, and information about, Neighbourhood Planning and the Totnes Neighbourhood Plan (Thea Platt); and finally an explanation of the day's activities and the importance that was being placed on the students views and how they would be incorporated into the views already gathered from the wider community and used to inform the development of the Neighbourhood Plan (Margaret Wilkinson, Planning for Real Unit).

Students dispersed to their various classrooms and Session 1 continued with the students discussing and identifying the “strengths” and “weaknesses” of Totnes, clustering the post it notes, and pulling out key points..

- Session 2: began with a “blue sky” thinking activity in order to develop a “Vision” for the future of Totnes. This activity led into a theme based session which provided students with the opportunity to consider the main issues related to each theme, discuss and put forward their own views and ideas. Students were then asked to identify key points that had come out for each Theme and by using colour coded “flags” to place their ideas onto a large map of the Totnes Neighbourhood Plan area.
- Session 3: Offered the students the opportunity working in Theme groups in their classrooms to start to develop their ideas towards a final presentation.
- Session 4: Classroom activity of bringing all the ideas together and developing one final Class presentation.
- Session 5: All the classes came together again in the School Theatre and each Class made their presentation in front of the other students, their teachers, Thea and Margaret, and three members of the Totnes Neighbourhood Plan Steering Group.

Thanks go to all participating Year 10 Students for their hard work, the Teachers supporting each class of children, and Natalie Clark (KEVICC) who organised the “off curriculum” day.

### Session 1: Strengths and Weaknesses:

The students identified the “**strengths**” of Totnes as being:

- The range of facilities available including the local Schools; the Leisure Centre; the market; the skate park; rugby and football fields; and the range of shops.
- The community – the people, diversity, community spirit, non-judgemental; multi-cultural, and the many local groups and clubs.
- The independent / locally owned shops and cafes which inject money into the local economy.
- The natural environment: the river; scenic local area; open spaces; parks; very natural; wildlife.
- Transport links and accessibility including foot and cycle paths.
- The town’s uniqueness.
- A tourist attraction – history and heritage.
- Known as a “green” / “eco” town.

The students identified the “**weaknesses**” of Totnes as being:

- The lack of “High Street name” shops and eating / food outlets which appeal to young people. That the shops are expensive, there is a lack of choice in terms of supermarkets; shops are only open until 5pm; and there are too many Charity shops.
- The traffic system in the High Street, as well as the levels of traffic; and public transport (buses) all came in for a lot of criticism.
- The lack of places to go and activities to do for young people
- The condition of the River Dart and weir – pollution and rubbish
- The lack of open spaces / parks where young people can “chill out”
- Poor quality of environment e.g. litter and rubbish; areas used by dog walkers; and the astro-turf.
- A drugs issue.

### Session 2: “Blue Sky” thinking – the Vision:

The following statements / words reflect the students’ thoughts about a future Totnes:

- A town that has pride in its culture and heritage. Keep what makes Totnes special. Keep old buildings.
- Unique.
- A place of celebration towards people of all backgrounds / continue to be multi-cultural / hold social events and festivals. A social community for all generations. Bigger population including refugees.
- Where homes are affordable, there is less homelessness, self-sustaining eco homes. Less second (holiday) homes.
- For shops and food outlets to also meet the needs of young adults. Sitting alongside independent shops. Shops for local people, not just tourists.
- More jobs, including jobs created especially for young people from the community.
- Less young people leaving the area because of lack of jobs and expensive houses.
- Sustainable renewable energy.

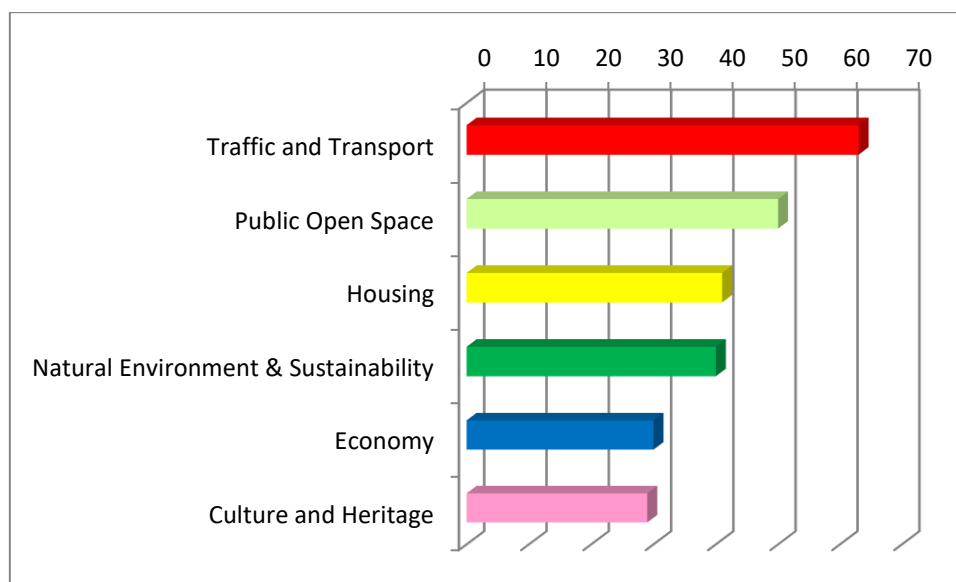
- Better transport, less congestion, better foot and cycle ways. Bus lanes, more and cheaper parking spaces. Better traffic system on High Street.
- Better facilities for young adults. More social areas, places to go, and activities for young adults.
- A cleaner environment. People collaborating in maintaining spaces. Allotments and community spaces created. More parks to meet the needs of people of all ages. Keep the fields.
- Greater investment in the town (from Government)
- A safe Totnes – police presence; not known for drugs.

### Session 2: Generating views under the different Themes

For this activity students, still working in their Classroom groups, were provided with the following information:

- Information about the main issues
- A number of “prompt” questions – to help facilitate discussion and generation of ideas
- A map of Totnes annotated with information relevant to the Theme.
- A blank Theme headed flipchart to capture students views
- A central large map of Totnes and coloured “Theme” flags to enable to students to record onto the map their key points.

The graph below provides an indication of the number of post it notes students generated under each of the Themes:



*Please Note: The graph above does not reflect the fact that the students also transferred a number of their post it notes from their Theme flipcharts for use as part of the final Presentations and these were therefore not included in the figures above.*

## **Traffic and Transport**

### Levels of traffic:

The views generated demonstrate the students' concern about the amount of traffic presently impacting on Totnes, especially at peak times – Station Road was mentioned where at peak times traffic has to queue; the pollution this causes; and with more houses under construction this will lead to more traffic.

One group of students created a plan for a new traffic system – with new roads created around the town which would take through traffic away from Totnes and alleviate the problems and pressures on a number of key junctions and roundabouts in the town and thereby ease congestion.

Other measures put forward by the students included: traffic lights and a by-pass; more controlled traffic at rush hour; better signposting; and to change the town back which would reduce traffic.

### Totnes High Street:

The students' put forward a number of different views and possibilities: that it should be one way – up the High Street; that it should be a clear route from bottom to top; and that it should be car free. They also commented that when a traffic plan is made it should be adhered to and not changed every year.

### Parking:

This was summed up through the comment that more parking places were needed.

### Public Transport:

It was the students' view that better public transport would mean less pollution. They highlighted that an improved service into Totnes was required from outlying areas and surrounding towns and villages and gave the example of Stoke Gabriel which has no public transport just the restricted Bob the Bus service. They also wished to see an increase in the frequency of buses and also of trains.

The view was put forward to have dedicated bus lanes which would mean that buses can get to their destinations more quickly.

There were a number of comments made about the routes of the buses which some students felt did not make sense and that bus timetables were too confusing at present and needed to be made understandable.

Students felt that improved bus shelters were needed that were cleaner and more appealing.

A suggestion was put forward for a Tram System in Totnes to run from Dartington to Bridgetown.

### Others ways of getting around:

Cycling: students felt that cycling should be encouraged through a hire bike scheme; by connecting cycle paths with funding from the Council; and also through improving existing cycle paths and creating more cycle lanes and paths for cyclists only.

Walking: to encourage more people to walk students identified the need for more footpaths; more accessible walkways; and that the walk from Dartington to Totnes should be for walkers only. In terms of pedestrian safety it was suggested that more crossing points and more zebra crossings should be provided.

Flags placed on the large map of Totnes:

- Car pool / car share scheme: placed on Totnes Town Centre (Coronation Road and Totnes Bridge) and also on the A381/A385 near Weirfields.
- Cycle path from Paignton to Totnes: placed at Bridgetown Hill / Weston Lane junction.
- Electric charging points: placed in the Bridgetown area of map
- Flyover (part of new ring road / traffic system): Plymouth Road across Copland Meadows / School / residential areas to join up with A385.
- Provision for cyclists: southern edge of Totnes; Bridgetown area; land south of Parkers Way / Culverdale.
- Diversions / fewer queues: Western By Pass / Plymouth Road junction.
- Paths and safer crossing points: High Street, Fore Street
- One Way: up the High Street
- Paths suitable for all: Plymouth Road near Western By Pass; Town Centre area; Vire Island
- Promote eco-friendly electric cars: Babbage Road area
- Redesigned bus timetable: Fore Street
- Relocate Bus Station on the bank of the River: land east of River Dart in Bridgetown & A831 area.
- Ring road to direct traffic from Centre (part of new traffic / ring road system): Bridgetown Hill / Weston Lane junction
- Speed cameras: Bridgetown Hill
- Tractors should not be on roads at rush hour: Bridgetown Hill
- Turn main street into non-through road: High Street

### Public Open Spaces

Existing Facilities:

A number of existing facilities came in for criticism by the students. These included:

- the Skate Park which they felt needed to be refurbished and needed lighting;
- the astro turf which needed to be improved because it is dangerous;
- the parks which presently are focussed on younger children and do not offer much for young adults;
- the Leisure Centre/swimming pool which they identified as not being very popular especially the pool. Their view was that this facility needed updating and to offer something new and affordable for teenagers (clubs and games).
- Vire Island – the river area and island needed to be made safer, with less rubbish, and for the existing benches to be fixed and more provided.

A suggestion put forward was to employ people to care for the Sports Field.

**Future provision:**

In addition to their comments about existing facilities, students identified the need for the creation of more open spaces and parks which were clean and safe; better designed; with better facilities to meet the needs of a wider age range. One suggestion was that there should be something like Dartington Gardens in Totnes.

The need for more places for young people to meet and hang out was identified and a suggestion put forward that a donation fund be started for the purchase of a new field for teenagers. Leechwell Gardens was put forward as a location for a youth shelter.

The Dairy Crest site was seen as an opportunity for provide an area for shops for young and old alike, and a new community space for everyone.

Another suggestion put forward was that Elmhirst (after the Grove leave) should be used to provide leisure provision for young people.

**General:**

The need for more litters bins; more dog parks; more benches and indoor seating areas; and the creation of more community space were all identified by students.

**Flags placed on large map of Totnes:**

- Band practice space: Bridgetown area – Christina Park
- Create open space for informal play: Bridgetown area; Borough Park
- Improve general parks / open spaces: Borough Park
- Improved leisure facilities: Borough Park
- Link up foot / cycle paths to get to parks: Totnes general
- More activities for our young people: Western side of Totnes in open space; Dairycrest site; Bridgetown area
- More areas for young adults – update parks as they are all for younger children: Bridgetown area.
- More bins: Borough Park; Bridgetown area; High Street.
- More open spaces: Lower Collapark
- More outdoor shelter / seating: open space between KEVICC and Barracks Hill; Westonfields.
- Places to hang out: Totnes general
- Skate park: Borough Park; Bridgetown area.

## **Housing**

**Affordability:**

Housing in Totnes was seen as too expensive and that, for young people, the lack of good facilities meant it was an undesirable place to live.

A view expressed by students was that more affordable, good quality homes were required to serve the needs of a variety of ages and household sizes, not just for families and old people, including

flats e.g. for students, housing for younger people, and to address homelessness. Another suggestion put forward was that existing houses should be renovated.

Whilst students held the view that building expensive houses should be stopped, there was also the view put forward that lowering house prices in Totnes could ruin the economy.

#### New Housing:

Different groups of students / classes expressed differing views about future housing. On the one hand it was felt that there were lots of geographical locations for new housing; that building should take place on suitable areas which were accessible to public transport; that older people's housing should be close to shops and good community facilities; and that whilst more housing was needed it should not take up too much of the open land or take over the town.

On the other hand other groups of students were unhappy that existing fields are being built on and that no more houses should be built.

#### Style and Quality:

Students identified the need for quality but traditional housing and that new housing to feel "Totnes" and avoid ruining area with housing that looks too "different". There was another difference of view in terms of density – one view was that large estates with houses close together were not desirable, while another suggested that houses should be built close together with amenities e.g. shops, in order to save on energy and heating.

#### Renewable Energy:

The view put forward by students was to find better ways to conserve energy so that there were less solar panels.

#### Flags placed on large map of Totnes:

- A mix of tenures / opportunities – self build, co-ops, rent, ownership: Totnes general – placed outside town area; Bridgetown; Copland Meadows; open area south of Maudlin Road; Whiteley Avenue; large open space south of Plymouth Road; Harpers Hill; Moat Hill; northern tip of Totnes.
- Apartment blocks: land north of Bridgetown Road at junction with Weston Lane; land south of and beyond St. Peter's Quay.
- Design for the needs of a variety of age groups: open area south of Maudlin Road; land near Weston Lane / Blackpost Lane
- Homes that are energy efficient: Totnes general – placed outside town area; Bridgetown; Maudlin Road; Kings Orchard
- Homes that suit a variety of household sizes: Western edge of town beyond Follaton House – open space; Totnes general – placed outside town area.
- Include "live work" units – Totnes general – placed outside town area.
- Include homes for people with different levels of mobility: Western side of Totnes in open space; Totnes general – placed outside town area.
- Infrastructure needs improving: Warland area; Totnes general; Steamer Quay Road.



- Modern housing (green): western edge of Totnes; Weston Lane / Blackpost Lane area
- More affordable housing: Station Road / Town Centre
- Older housing for heritage: Leechwell Street area; Station Road / A381.
- Sheltered Housing Scheme: Totnes general; Bridgetown area.
- Site for new housing: Bridgetown area; Totnes General; Harpers Hill; western edge of Totnes; south of Plymouth Road; south of Weston Lane; land south of and beyond St. Peter's Quay.
- Would not support housing here: land near Western By Pass southwest of Totnes; Maudlin Road, Leechwell Street – central open area; land within Steamer Quay Road and Culverdale / Landsdown Park; Dairycrest site; general – placed outside of town area; Bridgetown area; east of Western By Pass below Maudlin Road; Western By Pass / Harpers Hill – land between; land south of Weston Lane; land south of and beyond St. Peter's Quay.

### **Natural Environment and Sustainability**

The views generated by students under this theme covered a wide range of topics as outlined below – similar comments have also been made by the students under other Themes.

#### **Renewable Energy:**

The view of students was that there should be mass solar panel production throughout the town and that solar panels should be included for all new houses and new buildings. (Different from the view expressed under Housing above where students wanted to see less solar panels.) Wind farms and charging stations which were low price or free (like in other European countries) were other suggestions put forward.

#### **Pollution:**

Students saw traffic congestion as a cause of pollution and identified better transport as a way of reducing pollution and they also wanted Totnes to remain a factory free area, again to avoid pollution. Also mentioned under this Theme, as it was under the Public Open Space Theme, was the need to keep rivers cleaner.

#### **Litter:**

Students wished to see more labelled bins to reduce litter and help with recycling, for the relevant authority to be stricter about litter and that there should be penalties like fines.

#### **Housing:**

It was the view of the students that housing should not be built on flood plains and that there was a need for flood protection and that it was important that new houses had gardens to enable people to grow vegetables and fruit.

#### **Natural areas and wildlife:**

Students recognised the importance of the AONB which offers some protection and saw as a positive the natural areas, trees and wildlife in and around Totnes. They saw the need to protect existing wildlife areas and also to create more protected wildlife sites / areas in order to encourage more wildlife and for designated areas to be dog free.

#### **Parks:**

Students wished to see existing parks protected with more natural green land parks, public woods, and walking areas created.

Flags placed on large map of Totnes:

- Better network of footpaths: south of Plymouth Road; outlying residential areas; Maltmill area; Weirfields.
- Create more play areas for children: Borough Park; Bridgetown area
- Create more open space for informal play: open space on western side of Totnes; Borough Park; open space at Smithfields / Quarry Close off Plymouth Road.
- Include eco homes in plans: Whiteley Avenue; Punchards Down.
- Incorporate renewable energy sources – wind: open land either side of Harpers Hill
- Investigate community heating scheme: Maudlin Road; Plymouth Road
- Protect / manage local wildlife: Plymouth Road area / open land around and west of Western By Pass; Borough Park
- Protect area as open space: Plymouth Road area / open land around and west of Western By Pass; Borough Park
- This is an important green space / recreation area: open space around Castle; area of open space north of Bridgetown; Plymouth Road area / open land around; Borough Park.

## Economy

### Tourism:

Students recognised the importance of tourism to Totnes's economy and that the very healthy range of independent shops and cafes was good. They suggested that tourism could be increased through wider spread advertising. Totnes should appeal to all ages. It was suggested that creative media other than art should be developed and that Totnes Radio needs to be bigger and more well known.

### Employment:

The students identified the need for more work / employment opportunities for younger people seeking experience and full time employment in order to keep young people in the area and stop them looking for work elsewhere. They highlighted that there were few places that attracted young people to work there; that Totnes should bring more businesses to the town; and that there is a need for educational courses.

### Other issues:

There was a view that existing shops mostly focussed on elderly and tourists; that there was a lack of practical shops for local people; and that there was a need to reduce the number of Charity shops. It was felt that if more young people stayed in Totnes then there would be more shops aimed at young people. It was also mentioned that businesses restrict access e.g. some teenagers are not allowed in some cafes.

Again, as with the Housing Theme, there was mention of Totnes being too expensive for young people to live in or move to.

Flags placed on large map of Totnes:

- .Locate employment land here: Station Road; Western By Pass south of Town beyond end of Leechwell Street; Bridgetown – Westfields area; Dairycrest site
- Opportunities for cafes , businesses by Leisure Centre: Totnes Pavilion (part of Borough Park)
- Original unique businesses (handcrafted and handmade): South Street
- Skills and Training Centre: Town Centre area; Dairycrest site.
- Starter business unit: High Street near junction with South Street
- Volunteer Centre: Town Centre area
- Workshops: Dairycrest site; Bridgetown area.

### Culture and Heritage

The culture and heritage of Totnes was seen as something to celebrate, promote, and used to attract tourists. It was felt that the Castle and its history should feature in key events including re-enactments and that more information and education about the town's culture, history, and heritage was needed. It was felt that there was also the opportunity to feature history more prominently throughout the town. Students also put forward the view that some of the town's old buildings should be renovated.

Students felt that art should feature more prominently – Totnes style and culture – and displayed around the town. Another idea was to feature “In Totnes” creativity and tie this in to the schools and culture with exhibitions around the town. In relation to art, students also wanted to see the Art College reopened.

It was the view of the students that the Market Place and Square was in need of improvement and that the Christmas Market should be held over a longer period and spread over a larger area. It was felt that a better and bigger market would attract tourists.

### Flags placed on large map of Totnes:

- .A young people's café: Jubilee Road
- A place for teenagers to hang out and be sociable: High Street / South Street
- Activities / activity clubs for the elderly: Bridgetown area; Totnes Pavilion; Town Centre area
- Advice and Information Point: High Street / Fore Street; Bridgetown area
- Band practice space: Dairycrest site
- Children and Young People's Centre: Coronation Road; Dairycrest site; Borough Park.
- Community Hub with access to computers: High Street / Fore Street; Dairycrest site; Leechwell Street.
- Ensure local facilities are accessible for all: Totnes Pavilion; Dairycrest site; Western By Pass, Plymouth Road; New Road.
- Feature and encourage art and cultural art. Maybe display art around town: High Street
- Include Castle (and history of Totnes) in events e.g. Christmas and Halloween: Castle Street
- Make / renovate museum to be more interesting and interactive: Fore Street
- More authentic, nice quality cultural food: Coronation Road area
- More things to do for young people e.g. events, skate, and sport: Borough Park
- Updated / new Leisure Centre: Bridgetown area

### **Sessions 3, 4 and 5: Presentations**

Sessions 3, 4, and 5 offered the students to identify key issues, firstly in their theme groups within their classrooms and then to come together as a whole class to prepare a presentation which would be given to the Year Group.

Presentations took a variety of forms including: video, poetry, and a play. Material used for the presentations was collected from the students and recorded.

#### **Appendices:**

- Strengths, Weaknesses and Vision – record of views generated
- Theme work – record of views generated
- Record of “flags” placed on the large map of Totnes
- Presentations – not a complete set.

<b>Totnes Neighbourhood Plan</b>		
KEVICC - Consultation with Year 10 Students - 12th October 2015		
<b>STRENGTHS - WHAT IS GOOD ABOUT TOTNES</b>		

<b>Class Room</b>	<b>Category</b>	<b>Post it notes</b>
43	Character	Green life
43	Character	Lots of independent shops
43	Character	Lots of shops are owned by people in Totnes
43	Character	Not too many supermarket chains or retail stores. Makes the town unique.
43	Character	Unique
43	Character	Unique
43	Community	A good community spirit (i.e. respect, acceptance)
52	Community	An active community
52	Community	Community
43	Community	Different events
52	Community	Diversity
51	Community	Ethnic equality
52	Community	Expressive
52	Community	Freedom!
52	Community	Generally non-violent
52	Community	Independent
52	Community	Loads of weird, interesting people
52	Community	Lots of free spirited people
43	Community	Lots of good local groups and clubs
52	Community	Lots of hippies
52	Community	Lots of sound geezers
52	Community	Non-violent (safe) (key point)
52	Community	Safe
52	Community	The fact that we don't have people who judge
52	Community	The people (key point)
52	Community	The people are very non-judgemental
52	Community	The Pride parade is awesome
52	Community	Unique
52	Community	Very multi cultural
43	Economy	Independent shops help support the local community
52	Economy	Individual businesses
52	Economy	Late night shopping
52	Economy	Late night shopping (key point)
52	Economy	Local businesses (key point)
52	Economy	Localised
52	Economy	Lots of lucrative businesses
52	Economy	Massive Morrison's and a Morrison's Garage right round the corner
43	Economy	Spar's job opportunities
52	Economy	The fact that there are no main stream shops or fast food.

Class Room	Category	Post it notes
43	Economy	Tourist attraction
43	Economy	Tourist attraction
43	Economy	Very economical
43	Environment	Close to wildlife
52	Environment	Eco friendly
52	Environment	Eco friendly (green) (key point)
25	Environment	Good park
43	Environment	It's very natural, historical, quite safe
52	Environment	Landscape (key point)
52	Environment	Nice and quiet
43	Environment	Ok footpath
43	Environment	Open spaces (fields)
52	Environment	Pretty landscape
52	Environment	River (key point)
43	Environment	Swans
52	Environment	There's a river
43	Environment	Totnes is quite concerned about the environment
52	Environment	Very green
43	Environment	Very green environment
43	Environment	Very scenic local area
52	Environment	Wildlife
52	Facilities	A thriving underground market
52	Facilities	Elizabethan market
43	Facilities	Facilities for public
52	Facilities	Good school (key point)
52	Facilities	Good school system that allows independence for students
52	Facilities	High quality foods
51	Facilities	Language School which attracts foreign visitors to the town.
51	Facilities	Large school. Small houses. Supermarket. Minor injuries unit. Leisure Centre. Trains. Local transport.
51	Facilities	Large school. Small businesses. Supermarkets. Minor injuries. Leisure Centre. Local transport - trains.
43	Facilities	Loads of good, privately owned shops / cafes
51	Facilities	Lots of places to learn - new library, Primary Schools (Grove's been renovated) and KEVICCs, daisy.
51	Facilities	Many public facilities
52	Facilities	Market (key point)
52	Facilities	Market Place
43	Facilities	Skate park
52	Facilities	Totnes has so many cafes and restaurants that if we have a Costa it will ruin the businesses and then Totnes will lose its individuality. Please no Costa. If people want to have a Costa they can go to Exeter.
51	Facilities	Traditional buildings.

Class Room	Category	Post it notes
52	Facilities	Youth Clubs & Leisure Centres
52	Heritage	Castle
52	Heritage	Famous for culture and diversity etc.
52	Heritage	Good heritage - old shops, castle etc.
52	Heritage	Good history (Castle) (key point)
52	Heritage	Rich history
51	Shops	Good sweet shops
51	Shops	Good: bakery, leisure centre; café; fish and chip shop; Morrison's; train station.
51	Shops	Not many empty shops.
51	Shops	Shop which sells special things
51	Stuff you can do	Good Leisure Centre
51	Stuff you can do	Leisure Centre
51	Stuff you can do	Leisure Centre e.g. swimming, gyms etc.
51	Stuff you can do	Many thriving small businesses that inject money into the local economy
51	Stuff you can do	Rugby field. Football field.
43	Traffic & Transport	Connecting train station
43	Traffic & Transport	Easy to access
	Transport	Easy to access
51	Transport	Good transport links.
52	Transport	Lots of foot / cycle paths (key point)
51	Transport	Quite regular in and out of Totnes.
51	Transport	Rail Station
	Transport	Totnes has loads of foot and cycle paths
51	Transport	Transport is good to go to different places e.g. train, buses.
42		No post it notes on flipchart - transferred to Theme flipcharts as part of follow up activity

<b>Totnes Neighbourhood Plan</b>		
KEVICC - Consultation with Year 10 Students - 12th October 2015		
<b>WEAKNESSES - WHAT IS NOT SO GOOD ABOUT TOTNES</b>		

<b>Class Room</b>	<b>Category</b>	<b>Post it notes</b>
43	Character	Everything is too expensive
43	Character	It's very expensive
43	Character	Very crowded (lots of people, small town)
43	Community	Don't have a lot of activities and places to go
43	Community	Lack of interesting things to do.
43	Community	Not enough activities
52	Crime	Infamous, unpopular (known for drugs)
52	Crime	Lots of drugs
52	Crime	Lots of people are on drugs
52	Crime	More police patrolling (out on the streets more)
52	Crime	Underage crime
52	Education	Wider range of public schools
52	Environment	Homeless people (encourage to go to Homeless Shelter)
43	Environment	Lots of rubbish and litter
43	Environment	Needs more open space such as parks and an area where young people can chill out.
43	Environment	The astro-turf is a disgrace
52	Environment	The pollution i.e. river
52	Environment	The river is quite dirty / polluted
43	Environment	The rubbish by the river
43	Facilities	I don't like Morrison's. Waitrose instead.
43	Facilities	No Costa
43	Facilities	No fast food places
43	Facilities	No shops for teenagers / young adults - too many tea shops.
43	Facilities	Shops are not great. Better shops.
51	Housing	Lots of empty places to build homes. Transport to go to other places (i.e. Paignton)
43	Housing	Property prices are expensive
43	Housing	The houses are ridiculously overpriced.
51	Housing	Unaffordable housing
52	Leisure	Christmas Tree Farm needed
52	Leisure	Craft Centre
52	Leisure	Lack of entertainment facilities
52	Leisure	More places for teenagers to go when it is raining (other than Morrison's)
52	Leisure	More places for youths or the public to go (not just cafes)
52	Leisure	More things to do (too many minors drug abuse)
52	Leisure	No places for younger people to socialise (cafes)
52	Leisure	Places for youths to go without being judged.



Class Room	Category	Post it notes
52	Leisure	Spas, nail bars
51	Natural Environment	Bad: used for dog walking
51	Natural Environment	Clean the weir! A disease is killing the fish L and there was a dead sheep in there too ....
51	Nothing to do, bad shops, and bad resources	Bad - Leisure Centre not so good. Improved facilities needed.
51	Nothing to do, bad shops, and bad resources	Businesses like these would make quite a bit of money
51	Nothing to do, bad shops, and bad resources	Independent shops - culture
51	Nothing to do, bad shops, and bad resources	More well known shops H&M, Claire's, Primark, New Look, Holister!!!
51	Nothing to do, bad shops, and bad resources	Not enough activities for children
51	Nothing to do, bad shops, and bad resources	Not enough things to do and shops for the younger citizens
51	Nothing to do, bad shops, and bad resources	Not many places to sit up and down the High Street.
51	Nothing to do, bad shops, and bad resources	Not many post boxes
51	Nothing to do, bad shops, and bad resources	Not very much to do in Totnes
51	Nothing to do, bad shops, and bad resources	Poor quantity of shops
51	Nothing to do, bad shops, and bad resources	Shops are only open till 5pm
51	Nothing to do, bad shops, and bad resources	Totnes needs more food places e.g. restaurants, fast food (McDonalds, KFC)! Starbucks or Costa. Because they are cheaper. A lot of young people like them
52	Shops & Restaurants	Better supermarkets
52	Shops & Restaurants	Every single shop is an extremely expensive gift shop
52	Shops & Restaurants	Garden Centre
52	Shops & Restaurants	Home delivery Pizza: Dominoes, Pizza Hut, Pizza Express

Class Room	Category	Post it notes
52	Shops & Restaurants	More good shops: Topshop, Hollister, Miss Selfridge, New Look, Urban Outfitters, JD, MAC, Victoria Secrets
52	Shops & Restaurants	More places to eat - fast food such as - Subway, Costa, McDonalds, KFC, Shakeaway
52	Shops & Restaurants	No Costa
52	Shops & Restaurants	Too many Charity shops and team rooms
43	Traffic & Transport	Bus: always late, not very nice to get (rubbish on them)
43	Traffic & Transport	The High Street traffic system is useless
43	Traffic & Transport	The way the road goes in town
43	Traffic & Transport	Traffic - After they changed what ways you go up the town / High Street
43	Traffic & Transport	Traffic - After they changed what ways you go up the town / High Street
43	Traffic & Transport	Traffic is shocking (i.e. High Street, Paignton Road)
51	Traffic and Transport	Bad bus routes.
51	Traffic and Transport	Bad traffic.
51	Traffic and Transport	Bad traffic. Expensive shops.
51	Traffic and Transport	Confusing traffic
51	Traffic and Transport	Confusing traffic system on the High Street
51	Traffic and Transport	The buses are rubbish
51	Traffic and Transport	Traffic
51	Traffic and Transport	Traffic coming in / out of Totnes
52	Transport	Cars parked on pavements blocking road
52	Transport	Go up the High Street instead of down (it's stupid)
52	Transport	Only one main road
52	Transport	Only one petrol station in the whole of Totnes
52	Transport	The traffic
52	Transport	Too much traffic
52	Transport	Totnes has loads of long traffic jams
52	Transport	Traffic
42		No post it notes on flipchart - transferred to Theme flipcharts as part of follow up activity

Totnes Neighbourhood Plan
KEVICC - Consultation with Year 10 Students - 12th October 2015
VISION - FUTURE TOTNES

Class Room No.	Post it notes
42	More "main-stream" shops for young adults.
42	We have a Vision! An image of a town that takes pride in its culture and heritage. Totnes is unique, a place of celebration towards people from all ethical backgrounds. We believe that Totnes should become a social community for all generations. We can do this by creating social events / festivals that can be publicised.
42	Our Vision: more affordable houses. Places where youths can go (skate park). Self sustaining eco friendly housing. Traditional theme. Safe environment. FREE puppies. Less traffic.
42	Our Vision: sustainable renewable energy. Better transport, less congestion. Better foot and cycle paths. Affordable housing. Nature - ?? - bats corridor through Totnes. Festivals - keep them going, things for youth.
42	Vision for the future Totnes: better skate park; better facilities for young adults.
42	Our Vision for Totnes: more chain stores and businesses. More tourists. More jobs. Less young people leaving the area because of lack of jobs and expensive houses. Affordable houses and flats. Less homelessness.
43	"Main stream" shops - variety, more for young adults: e.g. fast food (FKC, Subway, McDonalds); Coffee shops (Costa, Starbucks); more bookshops; and larger stores (M&S, Waitrose). <b>Note - comment:</b> I hope independent shops are taken into account when big decisions are made which could badly affect them.
43	Economy: more shops to employ young people
43	Dairycrest site: turn the old Dairy Crest site into a public space - music, historical site?
43	Housing: affordable housing
43	Environment: More environmental concern. More parks for people to hang out in and outdoor spaces. Better mixed age parks. Keep the fields. More bins - cleaner environment. More places to sit down. Cleaner environment e.g. able to walk to or back from school without seeing smokers. A golf course or at least a driving range or putting green as it would be useful for one and all (NOT a crazy golf course!)
43	Community / Activities / Facilities: more social areas and more activities for young adults; more things to do for young as well as old people; more places for young people to go; gay pride everyday.
43	Tourism: Sea World
43	Traffic and Transport: better transport; bus lanes; more parking spaces; more cycle paths; less potholes; cheaper fares; and why horse riding in centre.
51	More well known. Shops for young people e.g. Claire's, Primary, McDonalds, Starbucks, H&M, HMV, and FKC.
51	Big shopping centre
51	Better variety of shops
51	Have more shops for the younger people of the town
51	Better traffic system on the High Street

Class Room No.	Post it notes
51	We want better buses and more lanes / roads coming in and out of Totnes.
51	More <u>parking</u> and cheaper.
51	Yoga hall for younger
51	More leisure and fun things to do
51	More things for younger people (i.e. shops, places to eat, and things to do)
51	Better pool, extend and renovate, make more modern fitness centre.
51	More leisure activities.
51	Cinema
51	Sports teams
51	Keep nice, open, green areas - not lots of houses.
51	Covered outdoor seating
51	Nature Reserve
51	More allotments / community spaces
51	Make Vire Island nicer, more friendly etc.
51	More areas for young people.
51	Fitness park.
51	Keep old buildings but also expand the town and build more
51	£1 billion investment from the Government
51	Bigger population → refugees.
51	Less 2nd homes
51	Tourism attraction
52	Keep what makes Totnes special
52	People collaborating in maintaining spaces clean
52	Safe Totnes implementing police presence
52	Closed spaces for youngsters
52	Affordable spaces for youngsters
52	Not a place known for drugs
52	Jobs for young people from the community
52	Continue being multi-cultural
52	Shops for locals not only for tourists
52	High Street shops - not so tourist orientated

PLANNING FOR REAL® RESULTS	
KEVICC - Consultation with Year 10 Students - Combined results sorted by Theme	
Venue: KEVICC, Totnes	Date: 12th October 2015

Class	Theme	Post it note
42	Culture & Heritage	Lots of culture and moral
42	Culture & Heritage	A lot of public cultural events like markets.
43	Culture & Heritage	Have things going on at Totnes Castle.
51	Culture & Heritage	Feature art (and cultural art) throughout Totnes - display artwork (from Schools)
51	Culture & Heritage	Make events and town celebrations about culture and heritage to draw in tourism.
51	Culture & Heritage	Feature the Castle and its history in key events such as Halloween and Christmas
51	Culture & Heritage	Use culture, style and heritage to attract tourism.
51	Culture & Heritage	Make a feature of authentic cultural food places → make an Italian restaurant, Pizza
51	Culture & Heritage	Do events for younger - little kids to teach them about the history of Totnes.
51	Culture & Heritage	Make the market a "big thing"; make it better and bigger to attract tourism.
51	Culture & Heritage	We think art should be a big feature in Totnes, art about Totnes style and culture should be displayed around town, also you could include the art from KEVICC and Kennicot as well. This would really add to Totnes's style and displaying it would make the town a lot nicer.
51	Culture & Heritage	We think the Christmas market is very good, however it gets too crowded - spread out the market more and use some car parks for the roads get closed. Also make the market length longer (5 days one week, 2 days the next - not so long in between).
51	Culture & Heritage	Tourism is really important and really helps so we should also feature the Castle and its history at Halloween, Christmas, and throughout the year. The Castle is very important in Totnes's heritage, however at the moment it is not a big feature in the town. So if there is more events and information at the Castle, it will bring more culture to the town.
51	Culture & Heritage	Use culture and heritage to attract tourism
51	Culture & Heritage	The Market Place and Square could be in better condition
51	Culture & Heritage	Make Totnes's history more featured throughout the town.
51	Culture & Heritage	Keep traditional features.
51	Culture & Heritage	Feature the castle in key events like Halloween and Christmas.
51	Culture & Heritage	Make events and town celebrations about culture and heritage.
51	Culture & Heritage	Add style and culture by displaying art around town.

Class	Theme	Post it note
51	Culture & Heritage	Re-open Art College
51	Culture & Heritage	Feature an in Totnes creativity and tie in the schools and culture. Exhibitions or an around town.
51	Culture & Heritage	Renovate some old buildings
51	Culture & Heritage	More up to date films in cinema
51	Culture & Heritage	Cultural food (really authentic and quality) like Indian and Chinese.
51	Culture & Heritage	Fish and chip shops.
51	Culture & Heritage	Education on the town's heritage
51	Culture & Heritage	Dressing up and re-enacting actions in the Castle and Museum
51	Culture & Heritage	Tudor time buildings
42	Economy	Lots of independent shops, good for tourists, very healthy, lots of cafes.
42	Economy	Weakness: the rate of those homeless / on the street (including those of people with dogs).
42	Economy	Lots of homeless people
42	Economy	Weakness: Doesn't "approve / accept" "chain" events / shops / stores (though Totnes does have / contain chain shops).
42	Economy	Weakness: Highly polluted river that often kills wildlife / waterborne animals.
42	Economy	Strength: Generally friendly / helpful / lovely community.
42	Economy	Weakness: Not many work / job / employment opportunities for a younger person seeking experience.
42	Economy	Shops are mostly focussed on elderly and tourists - lots of charity shops and independent coffee shops.
43	Economy	Affordable housing does not work.
43	Economy	Shops aimed at old people mainly. If more young people stayed, there would be more shops for young people.
43	Economy	More jobs to keep local people living here.
43	Economy	Too expensive for young folk to move in.
43	Economy	Not many job opportunities for youth seeking full time work. Plus it is based on tourism.
43	Economy	Too expensive to live in for young people.
43	Economy	There are few places that attract young people to work there. Pubs - can't sell alcohol until we're 18; Charity shops - full of elderly; Tea shops - full of elderly.
43	Economy	Bring more interest in - other creative media other than art - make Totnes Radio bigger and well known.
43	Economy	Costa
43	Economy	No Costa
51	Economy	More affordable houses, but good quality not massive estates
51	Economy	Keep the "different" shops as that brings in tourism
51	Economy	Make Totnes more appealing for all ages
51	Economy	Increase tourism and have wider spread advertisement

Class	Theme	Post it note
51	Economy	Only have one or two at most Charity shops
51	Economy	Businesses: theatre, cinema, Costa, Starbucks, McDonalds, H&M, HMV, Claire's.
52	Economy	People will leave the area to find work elsewhere
52	Economy	Businesses are limited and are only available to certain people (such as teenagers aren't allowed in some cafes)
52	Economy	There's unique then there's old, Totnes is old.
52	Economy	Unique
52	Economy	A big hippy community
	Economy	Educational courses.
42	Housing	Housing in Totnes is way too expensive and needs to be affordable.
42	Housing	No wind farms or solar panels
42	Housing	History - Tudor buildings, Castle
42	Housing	A lack of practical shops
42	Housing	Lots of geographical locations
42	Housing	The Town is small
42	Housing	Nothing gonna change. I'm so bored
42	Housing	Strength: school for locals living locally in Totnes / Bridgetown
42	Housing	The fields around are having houses being built on them ☹️
43	Housing	Isn't a desirable place to live - no good facilities - too expensive.
43	Housing	Stop building expensive housing - people don't want holiday homes in Totnes - they'd have gone somewhere like Paignton.
43	Housing	Try to make housing feel "Totnes" so local people don't feel like new housing is ruining where they live as it looks too "different"
43	Housing	Suitable areas. Accessible to public transport.
43	Housing	Make houses that aren't just aimed at families and old people.
43	Housing	No more houses x 2
43	Housing	Less solar panels but better way to conserve energy
43	Housing	Not loads of houses squished together, have some out of the way.
43	Housing	Have houses "squished" together to save space and build more shops. And also that would save on energy and heating.
43	Housing	More Council houses / more affordable.
43	Housing	Cheaper houses / more flats for people like students. Cheaper houses.
51	Housing	I think there should be more Council estates (in Bridgetown)
51	Housing	There is a need for 16+ year olds houses, for when they move out.
51	Housing	More housing and more affordable housing
51	Housing	Quality, but quite traditional
51	Housing	Save the sheep - let them have their own homes!

Class	Theme	Post it note
51	Housing	Perhaps a Council estate for young people struggling to find housing in Totnes
51	Housing	An area for younger people - NOT ESTATE
51	Housing	There is a need for affordable housing for all.
51	Housing	Areas for older people as well
51	Housing	Strength: School. Space - fields.
51	Housing	More housing but not too much so it takes over the town. Make sure there are places to hang out and things to do!
51	Housing	More affordable housing.
51	Housing	Renovate houses that are already here
51	Housing	Don't build on empty land; leave places for farms and for young people to chill out e.g. parks, fields.
51	Housing	Don't take over too much nice land, keep it a countryside town.
52	Housing	More affordable housing e.g. flats and apartments
52	Housing	More housing for young people leaving home
52	Housing	Lowering house prices could ruin the economy
52	Housing	Council housing?
52	Housing	Desirable for older people - close to shops and there are good communities
52	Housing	Homeless shelters and housing
42	Natural Environment & Sustainability	Lots of natural areas - Long Marsh, Christina Park
42	Natural Environment & Sustainability	Better transport - less air pollution
42	Natural Environment & Sustainability	Wider scale use of solar panels
42	Natural Environment & Sustainability	Things like wind farms to increase sustainability
42	Natural Environment & Sustainability	Lots of trees and wildlife
42	Natural Environment & Sustainability	Lots of allotments → local farming → food sources
42	Natural Environment & Sustainability	There's lots of natural stuff like trees and stuff like that
42	Natural Environment & Sustainability	There are lots of animals. That's good.
42	Natural Environment & Sustainability	There's lots of veg
42	Natural Environment & Sustainability	The fields around are having houses being built on them
43	Natural Environment & Sustainability	Don't build on flood plains
43	Natural Environment & Sustainability	Flood protection
43	Natural Environment & Sustainability	More footpaths
43	Natural Environment & Sustainability	Ensure all new housing uses solar panels
43	Natural Environment & Sustainability	Make sure that any new houses have gardens that people can grow their own things in.
43	Natural Environment & Sustainability	Keep rare breed farm
51	Natural Environment & Sustainability	Labelled / more noticeable bins around town to help with litter and recycling
51	Natural Environment & Sustainability	Pollution through the river.
51	Natural Environment & Sustainability	Natural shelters - trees
51	Natural Environment & Sustainability	More protected wildlife sites with protected areas for the Greater Horseshoe bat.
51	Natural Environment & Sustainability	Add more bins to reduce litter.
51	Natural Environment & Sustainability	Separated bins e.g. general, paper etc.
51	Natural Environment & Sustainability	Be more strict about litter - especially dog poo on High Street. Add penalties like fines.
51	Natural Environment & Sustainability	They could keep rivers cleaner.



Class	Theme	Post it note
51	Natural Environment & Sustainability	Make wildlife more of a "thing". Designated areas for wildlife → no dogs.
51	Natural Environment & Sustainability	Protect wildlife sites and parks.
51	Natural Environment & Sustainability	Build parks
51	Natural Environment & Sustainability	Have more scenery parks and sites.
51	Natural Environment & Sustainability	More natural greenland parks and walking areas.
51	Natural Environment & Sustainability	Public woods.
51	Natural Environment & Sustainability	Add more specific things - places for wildlife
51	Natural Environment & Sustainability	There should be mass solar panel production throughout the town.
51	Natural Environment & Sustainability	Any new buildings should have solar panels - but blend in.
51	Natural Environment & Sustainability	Windmills.
51	Natural Environment & Sustainability	Keep Totnes a factory free area → less pollution
52	Natural Environment & Sustainability	Air pollution is a problem due to congestion
52	Natural Environment & Sustainability	Totnes is situated in an area of Outstanding Natural Beauty (ANOB) which offers it some protection
52	Natural Environment & Sustainability	The wildlife is minimal so encourage more wildlife around Totnes
52	Natural Environment & Sustainability	Generate energy in the future by solar panels and many many more.
52	Natural Environment & Sustainability	Promote eco friendly cars due to the mass amounts of traffic. Charging stations with low price or free like in other European countries.
42	Public Open Space	The skate park is terrible and needs to be refurbished.
42	Public Open Space	Skate parks lame and they need to put the light on at skate park.
42	Public Open Space	Skate parks lame. Turn the lights on at the skate park.
42	Public Open Space	The parks are more focussed on younger children - not much for young adults.
42	Public Open Space	Not enough places for "young people" to meet and hang out.
42	Public Open Space	Lots of nature - walk to Dartington.
42	Public Open Space	Lots of trees. Chill homies.
43	Public Open Space	Parks for teenagers - NOT little kids, so they have proper zip wires, proper slides like the big ones and agility courses that are actually challenging. Generally more areas for youths. Make the swimming pool less disgusting please.
43	Public Open Space	Improve the AstroTurf because it is dangerous! It is useless as well because Darts Hockey Club now have to play in Exeter because the astro is so poor. Make it 3G. Do it soon!
43	Public Open Space	Do something to where Elmhirst is (after the Grove leave). Something for kids like may be a golf course or a shopping centre.
43	Public Open Space	More dog parks.
43	Public Open Space	Benches.
43	Public Open Space	Like in Dartington where there's the Dartington Gardens, there should be one in Totnes.
43	Public Open Space	Stop building on animals' habitats! Recycle old buildings too.

Class	Theme	Post it note
43	Public Open Space	Dairy Crest Site: Make into some more shops for young and old people. Make it a new community space for everyone. Renovate the site. Surf machine (like the one in Wales).
43	Public Open Space	Vire Island: Make the river area (i.e. the island) safer, less rubbish.
43	Public Open Space	Vire Island: needs to be nicer. Less rubbish, no seagulls. Fix the benches and have more benches.
43	Public Open Space	Improve cycle path
43	Public Open Space	More of the cycle paths and footpaths.
52	Public Open Space	Places for teens to spend rainy days and when their bored.
52	Public Open Space	Parks and gardens need to be better designed.
52	Public Open Space	More bins.
52	Public Open Space	More open shelters like a big gazebo with seating, like a community space. You could have safe fireplace there or something else cool.
52	Public Open Space	More public open spaces are a good idea because that way people will have more places to go.
52	Public Open Space	I think that more public open spaces should be encouraged because then its more places people can go and feel like they can go anywhere.
52	Public Open Space	Not a lot of places to site indoors
52	Public Open Space	More indoor seating
52	Public Open Space	Encourage it more. So then there are more places altogether.
52	Public Open Space	Advertise a donation fund for the purchase of a new field for the teens.
52	Public Open Space	The leisure centre is not very popular, especially the pool. It all needs to be updated and maybe offer something new for teenagers at a price they can afford (clubs, games etc.)
52	Public Open Space	Leechwell Gardens could be given a shelter
52	Public Open Space	Council could put a sum of money to connect cycle paths (people should cycle more)
51	Public open spaces	Park and Garden
51	Public open spaces	Skate park
51	Public open spaces	Parks x 2
51	Public open spaces	Free fitness / sports facilities - fitness park
51	Public open spaces	Add more "chilling" cribs
51	Public open spaces	Link up foot and cycle paths throughout the town
51	Public open spaces	More footpaths and walking paths and cycle paths.
51	Public open spaces	Renovate the Leisure Centre to make it more appealing
51	Public open spaces	IMPROVE LEISURE CENTRE!
51	Public open spaces	Update leisure facilities
51	Public open spaces	Totnes could add theatre, cinema
51	Public open spaces	Make sure that there are places that look after the wildlife.
51	Public open spaces	Make sure open spaces stay open
51	Public open spaces	Design parks and gardens with better facilities
51	Public open spaces	Nicer / cleaner areas along rivers.
51	Public open spaces	Cleaner and safer open areas

Class	Theme	Post it note
51	Public open spaces	Cleaner and safer areas in the river that you can swim in.
51	Public open spaces	Employ people to care for the sports field.
42	Traffic & Transport	Stupid road in the middle of Totnes. Why did anyone think of that stupid idea. It was TERRIBLE.
42	Traffic & Transport	The amount of traffic is getting too much
42	Traffic & Transport	Buses taking stupid routes
42	Traffic & Transport	Traffic is already bad. More houses under construction = more traffic
42	Traffic & Transport	Better public transport (buses / trains) would mean less pollution.
42	Traffic & Transport	Weakness: I live 5-7 miles away in Stoke Gabriel and there are no public buses just a Bob the Bus on Tuesdays and Thursdays.
42	Traffic & Transport	Public transport is usually on time or not far away.
42	Traffic & Transport	The transport smells and traffic is terrible.
42	Traffic & Transport	Lots of congestion - air pollution.
42	Traffic & Transport	Buses take stupid routes.
42	Traffic & Transport	Traffic is bad because all the cars are forced to go down one narrow road.
42	Traffic & Transport	Friendly people on the transport!
42	Traffic & Transport	The traffic on Station Road in the morning and evening (5ish) is queued back to garage.
42	Traffic & Transport	Students have drawn a whole new road system onto the map attached to the Traffic and Transport flipchart which gives and main issues and prompt questions. Their drawings show the "problem" junctions; the roads that presently carry high levels of traffic; the new roads around Totnes that should be built; and the relocation of the bus station.
43	Traffic & Transport	The river may get polluted. It's bad anyway from Totnes down tbh(?). Sort it out.
43	Traffic & Transport	Make a traffic plan and stick to it!! Don't change the High Street Plan every year.
43	Traffic & Transport	Make High Street ONE WAY
43	Traffic & Transport	A clear route for when you can drive up the High Street. You should be able to drive from the bottom to the top.
43	Traffic & Transport	No cars in the High Street.
43	Traffic & Transport	More roads.
43	Traffic & Transport	The bus service is excellent as well as buses.
43	Traffic & Transport	I would love a tram system in Totnes stretching from Dartington right through to Bridgetown.
43	Traffic & Transport	Bus timetables that are understandable. I can't read the bus timetable, its too confusing
43	Traffic & Transport	Waiting areas / bus shelters should be more cleaner, sheltered and appealing.
43	Traffic & Transport	More buses so you don't have to wait, same with trains.
43	Traffic & Transport	Dedicated bus lanes (no cars in this lane) so buses can get places quicker, skip the traffic.
43	Traffic & Transport	More encouragement for people to cycle.
43	Traffic & Transport	Not many cycle lanes in town. Discourages

Class	Theme	Post it note
43	Traffic & Transport	People to cycle and kids get scared.
43	Traffic & Transport	More paths for <u>cyclists only</u>
43	Traffic & Transport	Make more accessible walkways
43	Traffic & Transport	The walk from Totnes to Dartington should be walkers only.
43	Traffic & Transport	Sort out town traffic system
43	Traffic & Transport	The traffic coming out of school isn't good. We're late for school and late home.
51	Traffic & Transport	Better signposts
51	Traffic & Transport	Make the High Street safer for pedestrians, maybe slower and clearer.
51	Traffic & Transport	More paths and crossings for people to make crossing roads safer.
51	Traffic & Transport	Better bus service
51	Traffic & Transport	More buses and straighter timetables
51	Traffic & Transport	More controlled traffic (at rush hour)
51	Traffic & Transport	More traffic lights and a by pass
51	Traffic & Transport	More roads so it does not take an hour to get out of Totnes. Make a road around it.
51	Traffic & Transport	By pass around Totnes so that there is less traffic around school rush hour
51	Traffic & Transport	More roads / lane coming in and out of Totnes
51	Traffic & Transport	Maybe another way to get in and out of Totnes.
51	Traffic & Transport	The traffic is bad.
51	Traffic & Transport	Should make High Street non through traffic
51	Traffic & Transport	Tractors not allowed on roads at rush hour traffic times.
51	Traffic & Transport	Many cyclists have to use the main road to cycle into Totnes - could be a cycle path.
51	Traffic & Transport	More public parking spaces.
51	Traffic & Transport	Electric / hybrid cars.
51	Traffic & Transport	General speed limit
51	Traffic & Transport	Speed cameras
52	Traffic and Transport	One way <u>up</u> the High Street
52	Traffic and Transport	The town needs to be changed back and it will reduce traffic.
52	Traffic and Transport	More main roads / normal roads
52	Traffic and Transport	More parking places
52	Traffic and Transport	More access
52	Traffic and Transport	Less queues / more diversions
52	Traffic and Transport	Traffic to go round rather than through
52	Traffic and Transport	More zebra crossings.
52	Traffic and Transport	More buses from surrounding towns into Totnes. More walking and cycling paths around Totnes.
52	Traffic and Transport	Having hire bikes or having more footpaths.

PLANNING FOR REAL® RESULTS	
Totnes Neighbourhood Plan	
<b>Venue:</b> King Edward VI Community College, Totnes - Year 10 Students	<b>Date:</b> 12th October 2015
Combined results of “flags” on maps sorted by Theme	

Class	Issue	Where	Suggestion
52	Culture & Heritage	Jubilee Road	A café where you can have your own card to get in and you just swipe it to get in (card for if you are still at school)
42	Culture & Heritage	South Street / High Street - space within	A place for teenagers to hang out and be sociable.
52	Culture & Heritage	Bridgetown area	Activities for the elderly because they make up a large part of the community in Totnes
42	Culture & Heritage	Totnes Pavilion (part of Borough Park)	Activity clubs for elderly needed
43	Culture & Heritage	Town Centre area	Activity clubs for elderly needed
52	Culture & Heritage	Totnes Pavilion (part of Borough Park)	Activity clubs for elderly needed
42	Culture & Heritage	High Street / Fore Street	Advice and Information Point
42	Culture & Heritage	Fore Street	Advice and Information Point
43	Culture & Heritage	Bridgetown area of map	Advice and Information Point
52	Culture & Heritage	Fore Street	Advice and Information Point
42	Culture & Heritage	Totnes Pavilion (part of Borough Park)	Band practice space needed
43	Culture & Heritage	Dairycrest site	Band practice space needed
42	Culture & Heritage	Coronation Road nr. Morrison's	Children and Young People's Centre
43	Culture & Heritage	Dairycrest site	Children and Young People's Centre
51	Culture & Heritage	Borough Park	Children and Young People's Centre
52	Culture & Heritage	Coronation Street area	Children and Young People's Centre
42	Culture & Heritage	High Street / Fore Street	Community Hub with access to computers
42	Culture & Heritage	High Street	Community Hub with access to computers
43	Culture & Heritage	Dairycrest site	Community Hub with access to computers
52	Culture & Heritage	Leechwell Street	Community Hub with access to computers
42	Culture & Heritage	Totnes Pavilion (part of Borough Park)	Ensure local facilities are accessible for all
43	Culture & Heritage	Dairycrest site	Ensure local facilities are accessible for all
51	Culture & Heritage	Western by-pass / Plymouth Road	Ensure local facilities are accessible for all

Class	Issue	Where	Suggestion
52	Culture & Heritage	New Road	Ensure local facilities are accessible for all
51	Culture & Heritage	High Street	Feature and encourage art and cultural art. Maybe display art around town.
51	Culture & Heritage	Castle Street	Including the castle (and history of Totnes) in events like Christmas and Halloween
51	Culture & Heritage	Fore Street	Make / renovate museum to be more interesting and interactive
51	Culture & Heritage	Coronation Road area	More authentic, nice quality cultural food - traditional fish and chips, Chinese, Indian, Italian - pizza
51	Culture & Heritage	Borough Park	More things to do for young people like more events, skate, and sport
52	Culture & Heritage	Bridgetown area	Updated / new Leisure Centres
52	Economy	High Street near junction with South Street	Businesses should be encouraged to employ younger people so that they are less likely to get into drugs.
42	Economy	Station Road	Locate employment land here
42	Economy	Western By Pass south of Town beyond end of Leechwell Street	Locate employment land here
42	Economy	Station Road	Locate employment land here
42	Economy	Bridgetown - Westfields area	Locate employment land here
43	Economy	Dairycrest site	Locate employment land here
52	Economy	Totnes Pavilion (part of Borough Park)	Opportunities for cafes / businesses by Leisure Centre
52	Economy	South Street	Original unique businesses (handcrafted and handmade)
43	Economy	Town Centre area	Skills and Training Centre
43	Economy	Dairycrest site	Skills and Training Centre
42	Economy	Totnes - north east - open land	Starter business units needed
43	Economy	Dairycrest site	Starter business units needed
52	Economy	High Street near junction with South Street	Starter business units needed
52	Economy	Totnes - general	Totnes could expand local sales to places outside of Totnes to allow more income
43	Economy	Town Centre area	Volunteer Centre
42	Economy	Bridgetown area - Steamer Quay Road / Pathfields	Workshops
43	Economy	Dairycrest site	Workshops
43	Economy	Bridgetown area of map	Workshops
42	Housing	Copland Meadows	A mix of tenures / opportunities - self build, co-ops, rent, ownership
43	Housing	Maudlin Road - open area south of	A mix of tenures / opportunities - self build, co-ops, rent, ownership
52	Housing	Whiteley Avenue	A mix of tenures / opportunities - self build, co-ops, rent, ownership
52	Housing	Plymouth Road - south of - large open space behind	A mix of tenures / opportunities - self build, co-ops, rent, ownership

Class	Issue	Where	Suggestion
		housing	
52	Housing	Bridgetown (road) at junction with Weston Lane - land north of	Apartment blocks
52	Housing	St. Peter's Quay - land south of and beyond	Apartment blocks
52	Housing	KEVICC & Barracks Hill - open space between	Cattle class area (normal / average people)
52	Housing	Bridgetown area / Weston Road	Cattle class area (normal / average people)
42	Housing	Western edge of town beyond Follaton House / in open space	Design for the needs of a variety of age groups
43	Housing	Maudlin Road - open area south of	Design for the needs of a variety of age groups
52	Housing	Weston Lane / Blackpost Lane - land in top corner	Design for the needs of a variety of age groups
52	Housing	Weston Lane / Blackpost Lane - land in top corner	Expensive housing allocated neighbourhood
52	Housing	St. Peter's Quay - land south of and beyond	Greener material houses for homeless
42	Housing	Western edge of town beyond Follaton House / in open space	Homes that are energy efficient
42	Housing	Western side of Totnes - in open space	Homes that are energy efficient
42	Housing	Punchards Down - residential area around	Homes that are energy efficient
43	Housing	General - placed outside town area	Homes that are energy efficient
43	Housing	Bridgetown area of map	Homes that are energy efficient
51	Housing	Bridgetown - Jubilee Road	Homes that are energy efficient
52	Housing	Bridgetown (road) at junction with Weston Lane - land north of	Homes that are energy efficient
52	Housing	Maudlin Road	Homes that are energy efficient
52	Housing	Kings Orchard	Homes that are energy efficient
42	Housing	Western edge of town beyond Follaton House / in open space	Homes to suit a variety of household sizes
43	Housing	General - placed outside town area	Homes to suit a variety of household sizes
43	Housing	General - placed outside town area	Include "live-work" units
42	Housing	Western side of Totnes - in open space	Include homes for people with different levels of mobility.
43	Housing	General - placed outside town area	Include homes for people with different levels of mobility.
51	Housing	Western By Pass and Harpers Hill - open land between	Inferior bad houses
42	Housing	Warland area of town	Infrastructure needs improving e.g. roads, drains, facilities.

Class	Issue	Where	Suggestion
43	Housing	General - placed outside town area	Infrastructure needs improving e.g. roads, drains, facilities.
52	Housing	KEVICC & Barracks Hill - open space between	Infrastructure needs improving e.g. roads, drains, facilities.
52	Housing	Steamer Quay Road	Infrastructure needs improving e.g. roads, drains, facilities.
42	Housing	Harpers Hill - cluster of buildings in open space	Mix of tenures / opportunities - self build, co-ops, rent, ownership
42	Housing	Moat Hill - below - open area	Mix of tenures / opportunities - self build, co-ops, rent, ownership
43	Housing	General - placed outside town area	Mix of tenures / opportunities - self build, co-ops, rent, ownership
43	Housing	Bridgetown area of map	Mix of tenures / opportunities - self build, co-ops, rent, ownership
52	Housing	Northern tip of Totnes boundary in residential area	Mix of tenures / opportunities - self build, co-ops, rent, ownership
52	Housing	Western edge of Totnes - south of Plymouth Road - open land	Modern housing (green)
52	Housing	Weston Lane / Blackpost Lane - land in top corner	Modern housing (green)
51	Housing	Station Road / Town Centre	More affordable housing
52	Housing	Leechwell Street area	Older housing for heritage
52	Housing	Station Road / A381	Older housing for heritage
42	Housing	School area / buildings (going out of Totnes on A385)	Sheltered Housing Scheme
43	Housing	General - placed outside town area	Sheltered Housing Scheme
43	Housing	Bridgetown area of map	Sheltered Housing Scheme
42	Housing	Bridgetown - north of Jubilee Road	Site for new housing
43	Housing	General - placed outside town area	Site for new housing
43	Housing	Bridgetown area of map	Site for new housing
43	Housing	Harpers Hill - open land either side	Site for new housing
51	Housing	Western By Pass and Harpers Hill - open land between	Site for new housing
51	Housing	Western edge of map outside NP area	Site for new housing
52	Housing	Plymouth Road - south of - between Follaton House and housing (towards Town Centre)	Site for new housing
52	Housing	Weston Lane - land south of	Site for new housing
52	Housing	St. Peter's Quay - land south of and beyond	Site for new housing
52	Housing	Parkers Way / Culverdale - land south of	Working class housing
42	Housing	Harpers Hill - open land	Would not support housing here
42	Housing	Western By Pass going south west out of Totnes - cluster of buildings	Would not support housing here



Class	Issue	Where	Suggestion
42	Housing	Maudlin Road / Leechwell Street / unnamed road - central open space	Would not support housing here
42	Housing	River Dart / Steamer Quay Road & Culverdale / Landsdown Park - land within	Would not support housing here
43	Housing	Dairycrest site	Would not support housing here
43	Housing	General - placed outside town area	Would not support housing here
43	Housing	Bridgetown area of map	Would not support housing here
52	Housing	Western By Pass & Harpers Hill - land between	Would not support housing here
52	Housing	Western By Pass (east of) / below Maudlin Road	Would not support housing here
52	Housing	Weston Lane - land south of	Would not support housing here
52	Housing	St. Peter's Quay - land south of and beyond	Would not support housing here
51	Natural Environment & Sustainability	High Street	Be more strict about litter especially dog poo on High Street. Add penalties like fines.
42	Natural Environment & Sustainability	Plymouth Road - south of	Better network of footpaths
43	Natural Environment & Sustainability	Outer lying residential areas	Better network of footpaths
51	Natural Environment & Sustainability	Maltmill area on map	Better network of footpaths
52	Natural Environment & Sustainability	Weirfields	Better network of footpaths
42	Natural Environment & Sustainability	River Dart - north Totnes	Clear out the "gunk" from the river around the Weir and add steps or a pontoon to jump off.
42	Natural Environment & Sustainability	Borough Park	Create more play areas for children
43	Natural Environment & Sustainability	Bridgetown area of map	Create more play areas for children
42	Natural Environment & Sustainability	Western side of Totnes - in open space	Create open space for informal play
42	Natural Environment & Sustainability	Borough Park	Create open space for informal play
51	Natural Environment & Sustainability	Smithfields / Quarry Close off Plymouth Road - open space	Create open space for informal play
42	Natural Environment & Sustainability	Bridgetown & A381 - land east of River Dart	Duck Pond
51	Natural Environment & Sustainability	Totnes general / rivers	Have the rivers cleaned up more

<b>Class</b>	<b>Issue</b>	<b>Where</b>	<b>Suggestion</b>
52	Natural Environment & Sustainability	Whiteley Avenue	Include Eco homes in plan
43	Natural Environment & Sustainability	Punchards Down - residential area around	Include the building of Eco homes in plans
43	Natural Environment & Sustainability	Harpers Hill - open land either side	Incorporate renewable energy sources - wind
43	Natural Environment & Sustainability	Maudlin Road - open area south of	Investigate community heating scheme
52	Natural Environment & Sustainability	Plymouth Road	Investigate community heating scheme
52	Natural Environment & Sustainability	Vire Island	More bins
51	Natural Environment & Sustainability	Bridgetown - Jubilee Road	More natural green land, parks and walking areas
51	Natural Environment & Sustainability	Collapark area	More public nature spaces such as woods
42	Natural Environment & Sustainability	Plymouth Road - open space on south side	Protect / manage local wildlife
43	Natural Environment & Sustainability	Plymouth Road area / open land around and west of Western By Pass	Protect / manage local wildlife
52	Natural Environment & Sustainability	Borough Park	Protect / manage local wildlife
43	Natural Environment & Sustainability	Plymouth Road area / open land around and west of Western By Pass	Protect area as open space
52	Natural Environment & Sustainability	Borough Park	Protect this open space
52	Natural Environment & Sustainability	Borough Park	Stop building on green fields.
42	Natural Environment & Sustainability	Castle - open space around	This is an important green space / recreation area
43	Natural Environment & Sustainability	Bridgetown - north of - area of open space	This is an important green space / recreation area
43	Natural Environment & Sustainability	Plymouth Road area / open land around and west of Western By Pass	This is an important green space / recreation area
52	Natural Environment & Sustainability	Borough Park	This is an important green space / recreation area
52	Natural Environment & Sustainability	Totnes	Totnes needs to be sustainable
52	Public Open	Bridgetown area - Christina	Band practice space needed

Class	Issue	Where	Suggestion
	Space	Park	
43	Public Open Space	Bridgetown area of map	Create open space for informal play
52	Public Open Space	Borough Park	Create open space for informal play
51	Public Open Space	Borough Park	Improve general parks / open spaces
51	Public Open Space	Borough Park	Improved leisure facilities
51	Public Open Space	River Dart - north Totnes near Railway Station	Link up foot / cycle paths to get to parks
42	Public Open Space	Western side of Totnes - in open space	More activities for our young people
43	Public Open Space	Dairycrest site	More activities for our young people
52	Public Open Space	Bridgetown area	More activities for our young people
42	Public Open Space	Bridgetown - green area behind Christina Park	More areas for young adults - update parks as they are all for younger children
52	Public Open Space	Borough Park	More bins
52	Public Open Space	Bridgetown area	More bins
52	Public Open Space	High Street	More bins to reduce littering
52	Public Open Space	Lower Collapark	More open spaces
52	Public Open Space	KEVICC & Barracks Hill - open space between	More outdoor shelter / seating
52	Public Open Space	Westonfields	Outdoor shelters
52	Public Open Space	General	Places to hang out e.g. improve Leechwell Gardens, add shelter and maybe fireplace in winter.
42	Public Open Space	Borough Park	Skate park
52	Public Open Space	Bridgetown area	Skate park wanted
52	Traffic & Transport	A381 (going north out of Totnes) - open land alongside	Added foot and cycle path to reduce traffic and pollution
42	Traffic & Transport	River Dart	Bridges - more crossing points
51	Traffic & Transport	Totnes - on map where A381 meets A385	By pass around Totnes - less traffic
42	Traffic & Transport	A381 / A385 - near Weirfields	Car pool / car share scheme
43	Traffic & Transport	Town Centre area	Car pool / car share scheme
51	Traffic & Transport	Town Centre / Coronation Road	Car pool / car share scheme
52	Traffic & Transport	Totnes Bridge	Car pool / car share scheme
51	Traffic & Transport	High Street / Cistern Street	Clearer signs on the roads / High Street - to inform drivers of the recent traffic changes

Class	Issue	Where	Suggestion
51	Traffic & Transport	Bridgetown Hill / Weston Lane junction	Cycle path from Paignton to Totnes as there are many cyclists using the main road, even at weekends, which cause traffic and queues on the way into Totnes
43	Traffic & Transport	Bridgetown area of map	Electric car charging points
42	Traffic & Transport	Plymouth Road across Copland Meadows / School / residential areas - to join up with A385	Flyover (part of new ring road / traffic system)
42	Traffic & Transport	Totnes - south of on edge of map by road (coloured yellow) that goes up to cross Green Lane and join A381(Western By Pass)	Make provision for cyclists
43	Traffic & Transport	Bridgetown area of map	Make provision for cyclists
52	Traffic & Transport	Parkers Way / Culverdale - land south of	Make provision for cyclists
52	Traffic & Transport	Western By Pass / Plymouth Road junction	More diversion / less queues
51	Traffic & Transport	High Street	More paths and crossings to make crossing the road safer for pedestrians
52	Traffic & Transport	Fore Street	More zebra crossings
52	Traffic & Transport	Fore Street	One way up the High Street
42	Traffic & Transport	Plymouth Road near Western By Pass	Paths that are suitable for all
43	Traffic & Transport	Town Centre area	Paths that are suitable for all
52	Traffic & Transport	Vire Island	Paths that are suitable for all
52	Traffic & Transport	Babbage Road area	Promote eco-friendly electric cars
51	Traffic & Transport	Fore Street	Redesigned bus timetable
42	Traffic & Transport	Bridgetown & A381 - land east of River Dart	Relocate Bus Station on the bank of the River
42	Traffic & Transport	Bridgetown Hill / Weston Lane junction	Ring road to direct traffic from Centre (part of new traffic / ring road system)
51	Traffic & Transport	Bridgetown Hill	Speed cameras
51	Traffic & Transport	Bridgetown Hill	Tractors should go on the roads when it is not rush hour
51	Traffic & Transport	High Street	Turn main street into non-through road

PLANNING FOR REAL® RESULTS	
Totnes Neighbourhood Plan	
Venue: King Edward VI Community College, Totnes - Year 10 Students	Date: 12th October 2015
Combined results of “flags” on map sorted by Location	

Class	Issue	Where	Suggestion
52	Traffic & Transport	A381 (going north out of Totnes) - open land alongside	Added foot and cycle path to reduce traffic and pollution
42	Traffic & Transport	A381 / A385 - near Weirfields	Car pool / car share scheme
52	Traffic & Transport	Babbage Road area	Promote eco-friendly electric cars
51	Culture & Heritage	Borough Park	Children and Young People's Centre
51	Culture & Heritage	Borough Park	More things to do for young people like more events, skate, and sport
42	Natural Environment & Sustainability	Borough Park	Create more play areas for children
42	Natural Environment & Sustainability	Borough Park	Create open space for informal play
52	Natural Environment & Sustainability	Borough Park	Protect / manage local wildlife
52	Natural Environment & Sustainability	Borough Park	Protect this open space
52	Natural Environment & Sustainability	Borough Park	Stop building on green fields.
52	Natural Environment & Sustainability	Borough Park	This is an important green space / recreation area
52	Public Open Space	Borough Park	Create open space for informal play
51	Public Open Space	Borough Park	Improve general parks / open spaces
51	Public Open Space	Borough Park	Improved leisure facilities
52	Public Open Space	Borough Park	More bins
42	Public Open Space	Borough Park	Skate park
42	Public Open Space	Bridgetown - green area behind Christina Park	More areas for young adults - update parks as they are all for younger children
51	Housing	Bridgetown - Jubilee Road	Homes that are energy efficient
51	Natural Environment & Sustainability	Bridgetown - Jubilee Road	More natural green land, parks and walking areas
43	Natural Environment & Sustainability	Bridgetown - north of - area of open space	This is an important green space / recreation area
42	Housing	Bridgetown - north of Jubilee Road	Site for new housing
42	Economy	Bridgetown - Westfields area	Locate employment land here

<b>Class</b>	<b>Issue</b>	<b>Where</b>	<b>Suggestion</b>
42	Natural Environment & Sustainability	Bridgetown & A381 - land east of River Dart	Duck Pond
42	Traffic & Transport	Bridgetown & A381 - land east of River Dart	Relocate Bus Station on the bank of the River
52	Housing	Bridgetown (road) at junction with Weston Lane - land north of	Apartment blocks
52	Housing	Bridgetown (road) at junction with Weston Lane - land north of	Homes that are energy efficient
52	Culture & Heritage	Bridgetown area	Activities for the elderly because they make up a large part of the community in Totnes
52	Culture & Heritage	Bridgetown area	Updated / new Leisure Centres
52	Public Open Space	Bridgetown area	More activities for our young people
52	Public Open Space	Bridgetown area	More bins
52	Public Open Space	Bridgetown area	Skate park wanted
52	Public Open Space	Bridgetown area - Christina Park	Band practice space needed
42	Economy	Bridgetown area - Steamer Quay Road / Pathfields	Workshops
52	Housing	Bridgetown area / Weston Road	Cattle class area (normal / average people)
43	Culture & Heritage	Bridgetown area of map	Advice and Information Point
43	Economy	Bridgetown area of map	Workshops
43	Housing	Bridgetown area of map	Homes that are energy efficient
43	Housing	Bridgetown area of map	Mix of tenures / opportunities - self build, co-ops, rent, ownership
43	Housing	Bridgetown area of map	Sheltered Housing Scheme
43	Housing	Bridgetown area of map	Site for new housing
43	Housing	Bridgetown area of map	Would not support housing here
43	Natural Environment & Sustainability	Bridgetown area of map	Create more play areas for children
43	Public Open Space	Bridgetown area of map	Create open space for informal play
43	Traffic & Transport	Bridgetown area of map	Electric car charging points
43	Traffic & Transport	Bridgetown area of map	Make provision for cyclists
51	Traffic & Transport	Bridgetown Hill	Speed cameras
51	Traffic & Transport	Bridgetown Hill	Tractors should go on the roads when it is not rush hour
51	Traffic & Transport	Bridgetown Hill / Weston Lane junction	Cycle path from Paignton to Totnes as there are many cyclists using the main road, even at weekends, which cause traffic and queues on the way into Totnes
42	Traffic & Transport	Bridgetown Hill / Weston Lane junction	Ring road to direct traffic from Centre (part of new traffic / ring road system)

Class	Issue	Where	Suggestion
42	Natural Environment & Sustainability	Castle - open space around	This is an important green space / recreation area
51	Culture & Heritage	Castle Street	Including the castle (and history of Totnes) in events like Christmas and Halloween
51	Natural Environment & Sustainability	Collapark area	More public nature spaces such as woods
42	Housing	Copland Meadows	A mix of tenures / opportunities - self build, co-ops, rent, ownership
51	Culture & Heritage	Coronation Road area	More authentic, nice quality cultural food - traditional fish and chips, Chinese, Indian, Italian - pizza
42	Culture & Heritage	Coronation Road nr. Morrison's	Children and Young People's Centre
52	Culture & Heritage	Coronation Street area	Children and Young People's Centre
43	Culture & Heritage	Dairycrest site	Band practice space needed
43	Culture & Heritage	Dairycrest site	Children and Young People's Centre
43	Culture & Heritage	Dairycrest site	Community Hub with access to computers
43	Culture & Heritage	Dairycrest site	Ensure local facilities are accessible for all
43	Economy	Dairycrest site	Locate employment land here
43	Economy	Dairycrest site	Skills and Training Centre
43	Economy	Dairycrest site	Starter business units needed
43	Economy	Dairycrest site	Workshops
43	Housing	Dairycrest site	Would not support housing here
43	Public Open Space	Dairycrest site	More activities for our young people
42	Culture & Heritage	Fore Street	Advice and Information Point
52	Culture & Heritage	Fore Street	Advice and Information Point
51	Culture & Heritage	Fore Street	Make / renovate museum to be more interesting and interactive
52	Traffic & Transport	Fore Street	More zebra crossings
52	Traffic & Transport	Fore Street	One way up the High Street
51	Traffic & Transport	Fore Street	Redesigned bus timetable
52	Public Open Space	General	Places to hang out e.g. improve Leechwell Gardens, add shelter and maybe fireplace in winter.
43	Housing	General - placed outside town area	Homes that are energy efficient
43	Housing	General - placed outside town area	Homes to suit a variety of household sizes
43	Housing	General - placed outside town area	Include "live-work" units
43	Housing	General - placed outside town area	Include homes for people with different levels of mobility.

Class	Issue	Where	Suggestion
43	Housing	General - placed outside town area	Infrastructure needs improving e.g. roads, drains, facilities.
43	Housing	General - placed outside town area	Mix of tenures / opportunities - self build, co-ops, rent, ownership
43	Housing	General - placed outside town area	Sheltered Housing Scheme
43	Housing	General - placed outside town area	Site for new housing
43	Housing	General - placed outside town area	Would not support housing here
42	Housing	Harpers Hill - cluster of buildings in open space	Mix of tenures / opportunities - self build, co-ops, rent, ownership
42	Housing	Harpers Hill - open land	Would not support housing here
43	Housing	Harpers Hill - open land either side	Site for new housing
43	Natural Environment & Sustainability	Harpers Hill - open land either side	Incorporate renewable energy sources - wind
42	Culture & Heritage	High Street	Community Hub with access to computers
51	Culture & Heritage	High Street	Feature and encourage art and cultural art. Maybe display art around town.
51	Natural Environment & Sustainability	High Street	Be more strict about litter especially dog poo on High Street. Add penalties like fines.
52	Public Open Space	High Street	More bins to reduce littering
51	Traffic & Transport	High Street	More paths and crossings to make crossing the road safer for pedestrians
51	Traffic & Transport	High Street	Turn main street into non-through road
51	Traffic & Transport	High Street / Cistern Street	Clearer signs on the roads / High Street - to inform drivers of the recent traffic changes
42	Culture & Heritage	High Street / Fore Street	Advice and Information Point
42	Culture & Heritage	High Street / Fore Street	Community Hub with access to computers
52	Economy	High Street near junction with South Street	Businesses should be encouraged to employ younger people so that they are less likely to get into drugs.
52	Economy	High Street near junction with South Street	Starter business units needed
52	Culture & Heritage	Jubilee Road	A café where you can have your own card to get in and you just swipe it to get in (card for if you are still at school)
52	Housing	KEVICC & Barracks Hill - open space between	Cattle class area (normal / average people)
52	Housing	KEVICC & Barracks Hill - open space between	Infrastructure needs improving e.g. roads, drains, facilities.
52	Public Open Space	KEVICC & Barracks Hill - open space between	More outdoor shelter / seating
52	Housing	Kings Orchard	Homes that are energy efficient
52	Culture & Heritage	Leechwell Street	Community Hub with access to computers
52	Housing	Leechwell Street area	Older housing for heritage



Class	Issue	Where	Suggestion
52	Public Open Space	Lower Collapark	More open spaces
51	Natural Environment & Sustainability	Maltmill area on map	Better network of footpaths
52	Housing	Maudlin Road	Homes that are energy efficient
43	Housing	Maudlin Road - open area south of	A mix of tenures / opportunities - self build, co-ops, rent, ownership
43	Housing	Maudlin Road - open area south of	Design for the needs of a variety of age groups
43	Natural Environment & Sustainability	Maudlin Road - open area south of	Investigate community heating scheme
42	Housing	Maudlin Road / Leechwell Street / unnamed road - central open space	Would not support housing here
42	Housing	Moat Hill - below - open area	Mix of tenures / opportunities - self build, co-ops, rent, ownership
52	Culture & Heritage	New Road	Ensure local facilities are accessible for all
52	Housing	Northern tip of Totnes boundary in residential area	Mix of tenures / opportunities - self build, co-ops, rent, ownership
43	Natural Environment & Sustainability	Outer lying residential areas	Better network of footpaths
52	Housing	Parkers Way / Culverdale - land south of	Working class housing
52	Traffic & Transport	Parkers Way / Culverdale - land south of	Make provision for cyclists
52	Natural Environment & Sustainability	Plymouth Road	Investigate community heating scheme
42	Natural Environment & Sustainability	Plymouth Road - open space on south side	Protect / manage local wildlife
42	Natural Environment & Sustainability	Plymouth Road - south of	Better network of footpaths
52	Housing	Plymouth Road - south of - between Follaton House and housing (towards Town Centre)	Site for new housing
52	Housing	Plymouth Road - south of - large open space behind housing	A mix of tenures / opportunities - self build, co-ops, rent, ownership
42	Traffic & Transport	Plymouth Road across Copland Meadows / School / residential areas - to join up with A385	Flyover (part of new ring road / traffic system)
43	Natural Environment & Sustainability	Plymouth Road area / open land around and west of Western By Pass	Protect / manage local wildlife
43	Natural Environment & Sustainability	Plymouth Road area / open land around and west of Western By Pass	Protect area as open space

Class	Issue	Where	Suggestion
43	Natural Environment & Sustainability	Plymouth Road area / open land around and west of Western By Pass	This is an important green space / recreation area
42	Traffic & Transport	Plymouth Road near Western By Pass	Paths that are suitable for all
42	Housing	Punchards Down - residential area around	Homes that are energy efficient
43	Natural Environment & Sustainability	Punchards Down - residential area around	Include the building of Eco homes in plans
42	Traffic & Transport	River Dart	Bridges - more crossing points
42	Natural Environment & Sustainability	River Dart - north Totnes	Clear out the "gunk" from the river around the Weir and add steps or a pontoon to jump off.
51	Public Open Space	River Dart - north Totnes near Railway Station	Link up foot / cycle paths to get to parks
42	Housing	River Dart / Steamer Quay Road & Culverdale / Landsdown Park - land within	Would not support housing here
42	Housing	School area / buildings (going out of Totnes on A385)	Sheltered Housing Scheme
51	Natural Environment & Sustainability	Smithfields / Quarry Close off Plymouth Road - open space	Create open space for informal play
52	Economy	South Street	Original unique businesses (handcrafted and handmade)
42	Culture & Heritage	South Street / High Street - space within	A place for teenagers to hang out and be sociable.
52	Housing	St. Peter's Quay - land south of and beyond	Apartment blocks
52	Housing	St. Peter's Quay - land south of and beyond	Greener material houses for homeless
52	Housing	St. Peter's Quay - land south of and beyond	Site for new housing
52	Housing	St. Peter's Quay - land south of and beyond	Would not support housing here
42	Economy	Station Road	Locate employment land here
42	Economy	Station Road	Locate employment land here
52	Housing	Station Road / A381	Older housing for heritage
51	Housing	Station Road / Town Centre	More affordable housing
52	Housing	Steamer Quay Road	Infrastructure needs improving e.g. roads, drains, facilities.
52	Natural Environment & Sustainability	Totnes	Totnes needs to be sustainable
52	Economy	Totnes - general	Totnes could expand local sales to places outside of Totnes to allow more income
42	Economy	Totnes - north east - open land	Starter business units needed
51	Traffic & Transport	Totnes - on map where A381 meets A385	By pass around Totnes - less traffic

Class	Issue	Where	Suggestion
42	Traffic & Transport	Totnes - south of on edge of map by road (coloured yellow) that goes up to cross Green Lane and join A381(Western By Pass)	Make provision for cyclists
52	Traffic & Transport	Totnes Bridge	Car pool / car share scheme
51	Natural Environment & Sustainability	Totnes general / rivers	Have the rivers cleaned up more
42	Culture & Heritage	Totnes Pavilion (part of Borough Park)	Activity clubs for elderly needed
52	Culture & Heritage	Totnes Pavilion (part of Borough Park)	Activity clubs for elderly needed
42	Culture & Heritage	Totnes Pavilion (part of Borough Park)	Band practice space needed
42	Culture & Heritage	Totnes Pavilion (part of Borough Park)	Ensure local facilities are accessible for all
52	Economy	Totnes Pavilion (part of Borough Park)	Opportunities for cafes / businesses by Leisure Centre
51	Traffic & Transport	Town Centre / Coronation Road	Car pool / car share scheme
43	Culture & Heritage	Town Centre area	Activity clubs for elderly needed
43	Economy	Town Centre area	Skills and Training Centre
43	Economy	Town Centre area	Volunteer Centre
43	Traffic & Transport	Town Centre area	Car pool / car share scheme
43	Traffic & Transport	Town Centre area	Paths that are suitable for all
52	Natural Environment & Sustainability	Vire Island	More bins
52	Traffic & Transport	Vire Island	Paths that are suitable for all
42	Housing	Warland area of town	Infrastructure needs improving e.g. roads, drains, facilities.
52	Natural Environment & Sustainability	Weirfields	Better network of footpaths
52	Housing	Western By Pass & Harpers Hill - land between	Would not support housing here
52	Housing	Western By Pass (east of) / below Maudlin Road	Would not support housing here
52	Traffic & Transport	Western By Pass / Plymouth Road junction	More diversion / less queues
51	Housing	Western By Pass and Harpers Hill - open land between	Inferior bad houses
51	Housing	Western By Pass and Harpers Hill - open land between	Site for new housing
42	Housing	Western By Pass going south west out of Totnes - cluster of buildings	Would not support housing here
42	Economy	Western By Pass south of Town beyond end of Leechwell	Locate employment land here

Class	Issue	Where	Suggestion
		Street	
51	Culture & Heritage	Western by-pass / Plymouth Road	Ensure local facilities are accessible for all
51	Housing	Western edge of map outside NP area	Site for new housing
52	Housing	Western edge of Totnes - south of Plymouth Road - open land	Modern housing (green)
42	Housing	Western edge of town beyond Follaton House / in open space	Design for the needs of a variety of age groups
42	Housing	Western edge of town beyond Follaton House / in open space	Homes that are energy efficient
42	Housing	Western edge of town beyond Follaton House / in open space	Homes to suit a variety of household sizes
42	Housing	Western side of Totnes - in open space	Homes that are energy efficient
42	Housing	Western side of Totnes - in open space	Include homes for people with different levels of mobility.
42	Natural Environment & Sustainability	Western side of Totnes - in open space	Create open space for informal play
42	Public Open Space	Western side of Totnes - in open space	More activities for our young people
52	Housing	Weston Lane - land south of	Site for new housing
52	Housing	Weston Lane - land south of	Would not support housing here
52	Housing	Weston Lane / Blackpost Lane - land in top corner	Design for the needs of a variety of age groups
52	Housing	Weston Lane / Blackpost Lane - land in top corner	Expensive housing allocated neighbourhood
52	Housing	Weston Lane / Blackpost Lane - land in top corner	Modern housing (green)
52	Public Open Space	Westonfields	Outdoor shelters
52	Housing	Whiteley Avenue	A mix of tenures / opportunities - self build, co-ops, rent, ownership
52	Natural Environment & Sustainability	Whiteley Avenue	Include Eco homes in plan

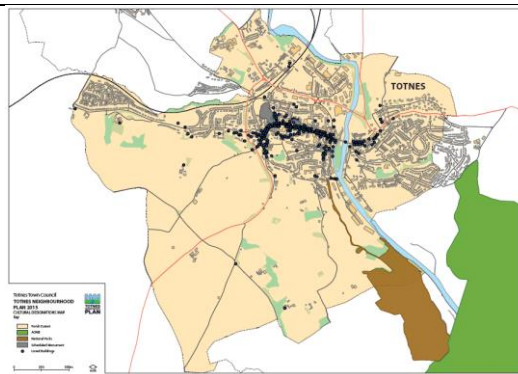
Totnes Neighbourhood Plan		
KEVICC – Year 10 Students – flipcharts from final Class Presentations		
CULTURE AND HERITAGE IN TOTNES		
<p><b><u>Our Poem</u></b></p> <p>Dear Mr. Gove,  Roses are Red  Violets are Blue  Our School's not an Arts College  'Cos there's no funding from you</p> <ul style="list-style-type: none"> <li>We want KEVICC to be an Arts College – its part of our culture and does not get the recognition it deserves.</li> </ul> <p>Key public buildings, not paying their way  The Guildhall, Mansion and Museum just to say  Let us make more of the town's hidden history  For many it is an unknown mystery  But fear not, for we are Totnes.</p> <p>A Town with heritage and culture  Tourists swooping like vultures  But what's worse than vultures  The terrorising seagulls causing damage and litter  But let us not be better for we are Totnes.</p> <p>Young people are going to leave  To pastures new like Torquay  More job opportunities in the bay  Please don't move financial support out of the way.  However, a strong town we are  and the community bond.  For we are Totnes.</p>	<p>Post it notes:</p> <ul style="list-style-type: none"> <li>Nando's</li> <li>Waitrose or Marks &amp; Spencer but preferably Waitrose due to the higher-end range of their food products. However, a Marks &amp; Spencer clothes shop may be of some use.</li> <li>More historical tours</li> <li>A department store such as Luis Vuitton or Selfridges. Not too big though and put it in Bridgetown.</li> <li>Yo Sushi</li> <li>Cinema</li> </ul>	<p><b><u>Our Manifesto</u></b></p> <ul style="list-style-type: none"> <li>We want more events on at the Castle. It is a great and well maintained space so utilising it would be beneficial to all.</li> <li>A better Museum: currently it is quite dated and as a result does not attract many visitors. Let's recognise the history more!</li> <li>We want to make Totnes's Hidden History open to all and more aware. Greater awareness through the use of signage, advertisement etc. will help us to do this.</li> <li>To protect ancient listed buildings is vitally important but in contrast we want the ability to allow construction on less Ancient and less important listed buildings that are desperately in need of work.</li> <li>To conclude, Totnes needs culture and heritage – it's what attracts people here so let's ...</li> <li>RESPECT</li> <li>PRESERVE and</li> <li>CHERISH</li> </ul> <p>We're very lucky to live where we do and Totnes must be looked after</p>

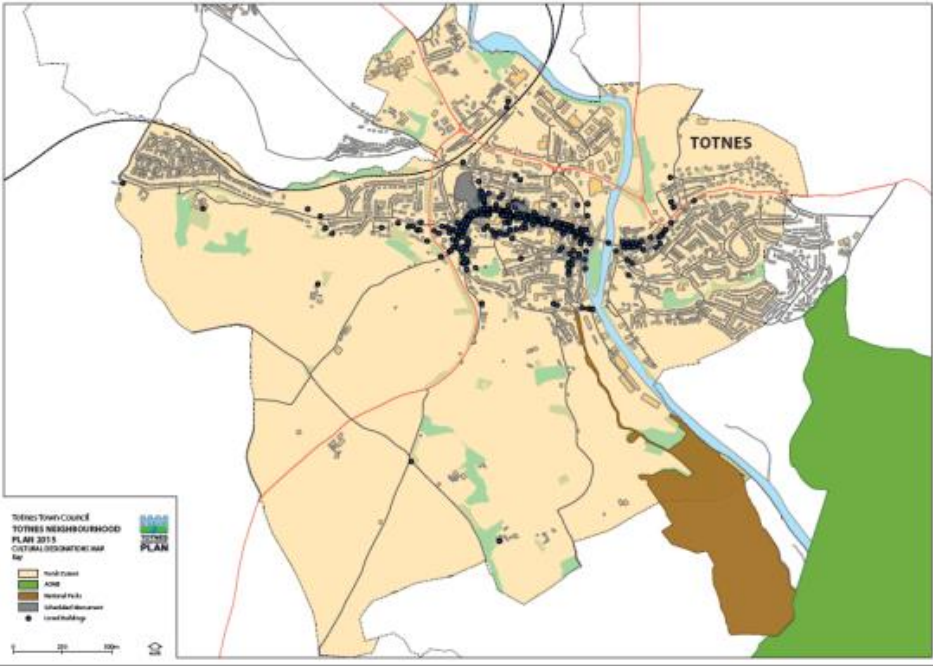
**Ed's Barn Rant**

“Because my 2 barns adjacent to my house are listed, we cannot convert them despite the fact they are falling down.

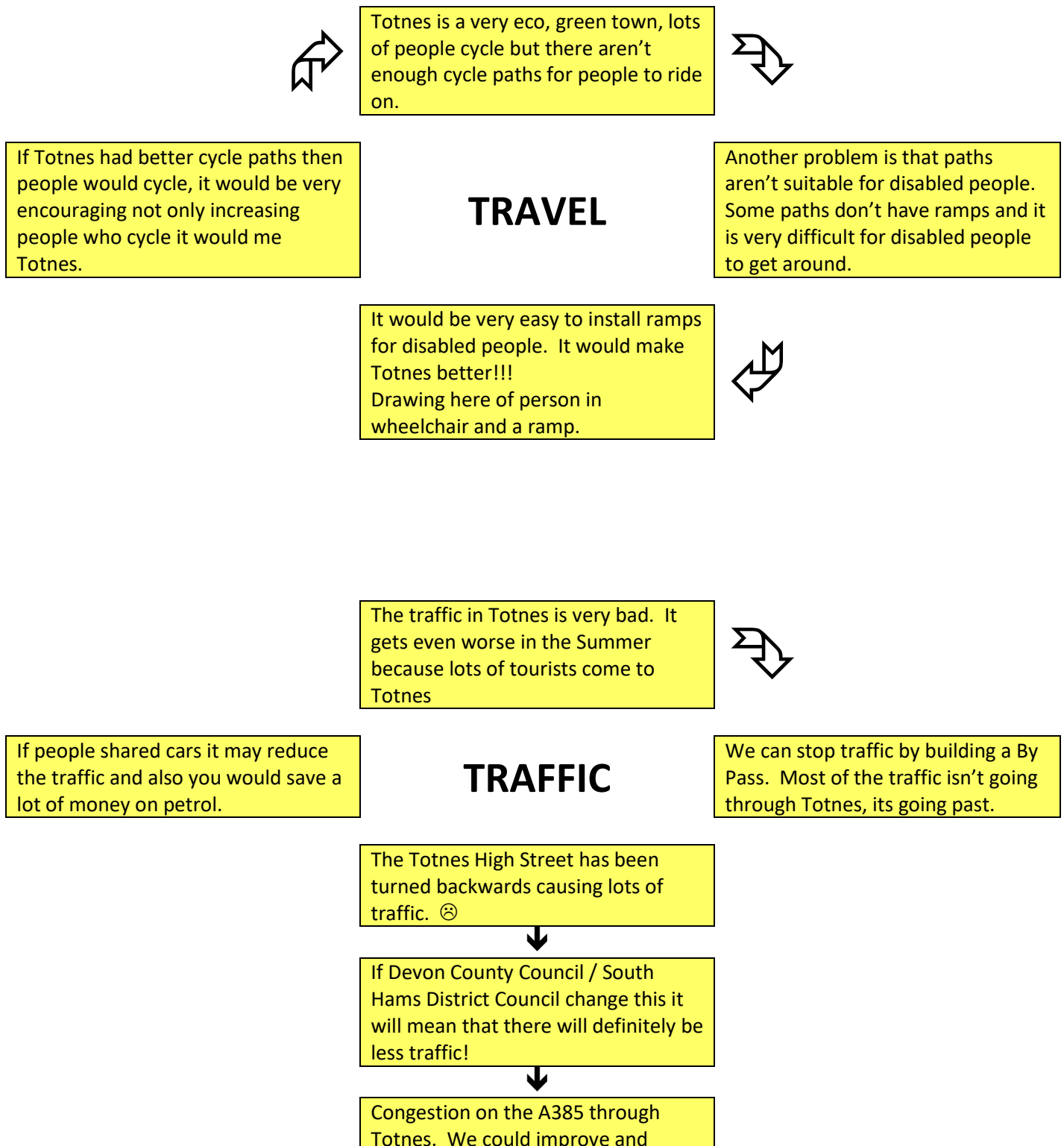
Furthermore, because houses that back on to the High Street are listed, we cannot build on it either”.

Ed Coles, a Totnes resident



Totnes Neighbourhood Plan		
KEVICC – Year 10 Students – flipcharts from final Class Presentations		
<b>CULTURE AND HERITAGE IN TOTNES</b>		
People need to appreciate the history of Totnes!		
1. Young people need to have interesting things in Totnes	2. Festivals could be a good way of publicly showing our heritage and culture	3. Not many people know about the culture or heritage. MORE PEOPLE NEED TO KNOW!
4. Certain buildings need attention for maybe financial reasons – tourism	5. More festivals	6. Culture is really important for Totnes because that is what makes it unique.
7. Tourism is important to the Town because it promotes it, and shows people a different side of Devon.	8. Culture needs to stay for tourism	9. Totnes is very historic but no one is aware. We only have a small museum – not very known. Could be bigger, more signs, publicity.
10. A Totnes Historical Parade / Fair – where the history is explained in fun ways and a range of historical food is to be tried.	11. Festivals or certain celebrations would make people aware and would be kind and considerate.	12. Culture and Heritage – tourism is good for the town because it's good to be known by tourists who may live further away.
13. Yes tourism is important to Totnes because when more people experience Totnes, the popularity will rise.	14. ??? (sorry I cannot read the handwriting) T! Totnes	Elizabethan Market is good – more things like that.
Expanding – <u>Totnes Culture Day!</u> People explore their individual culture (e.g. Scottish, Indian – anything like that) and dress in traditional dress while celebrating the history / culture of the town.		There needs to be a café where you can swipe a card in the door and it will let you in (only if you have a card!)
		
Students of this Class also put numbers of the map to link to the numbered post it note comments above.		

<b>Totnes Neighbourhood Plan</b>
KEVICC – Year 10 Students – flipcharts from final Class Presentations
<b>TRAFFIC AND TRANSPORT</b>



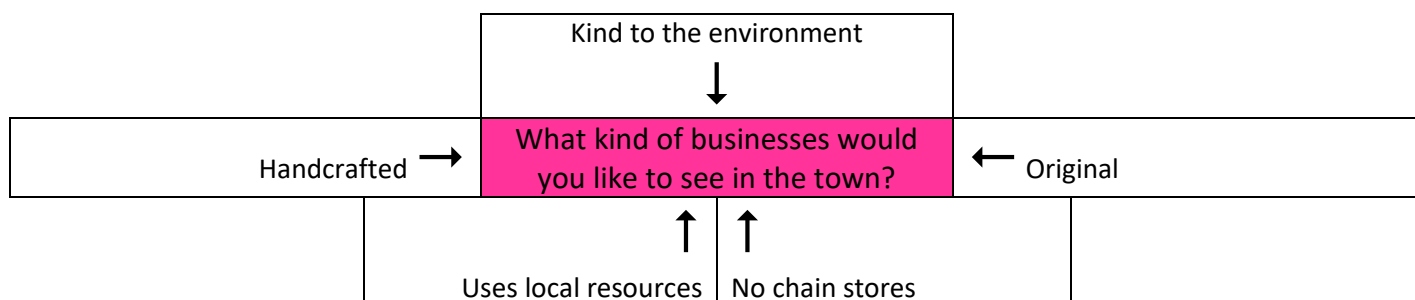
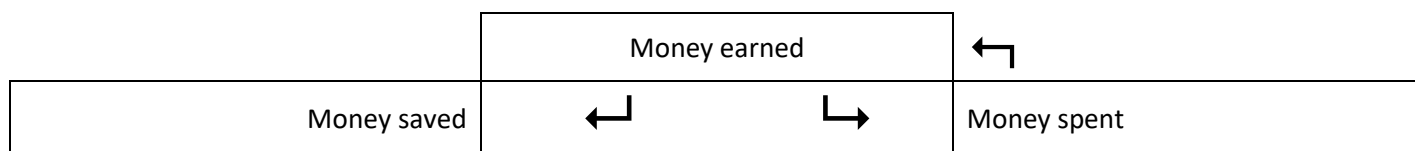


encourage a new road to be built to prevent traffic.

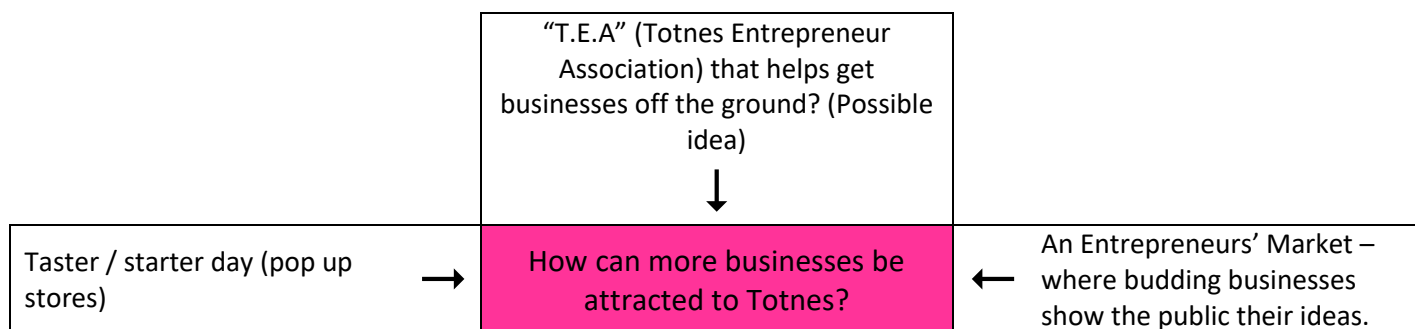
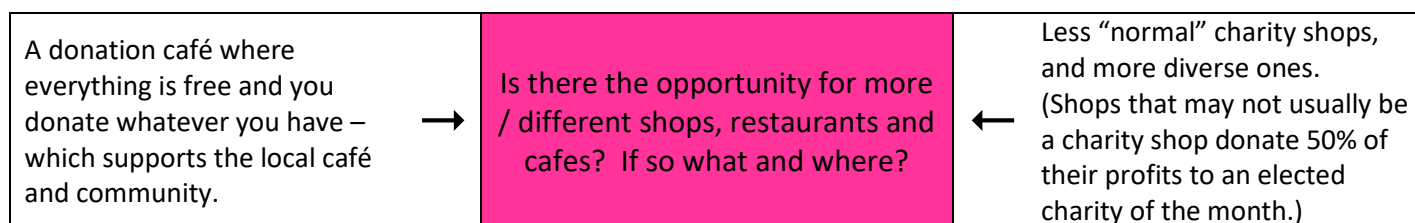
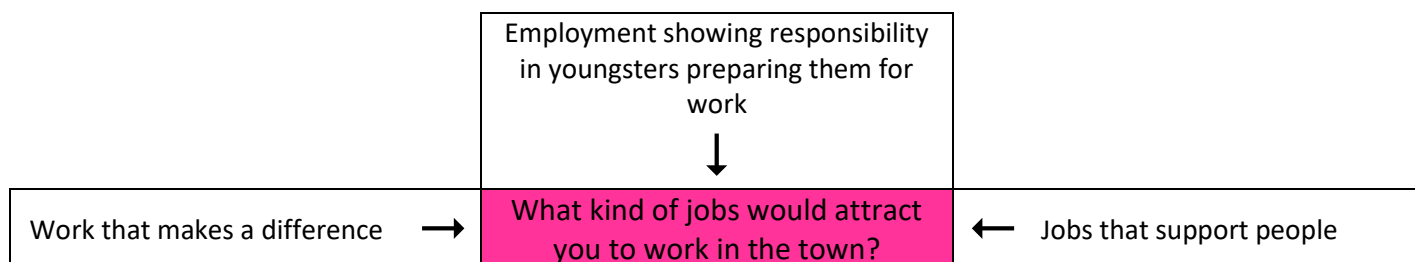
## Totnes Neighbourhood Plan

KEVICC – Year 10 Students – flipcharts from final Class Presentations

# ECONOMY



Totnes is currently working on supporting itself by having gardens owned by the public, in which anyone can use its resources.



Other Ideas		
Businesses should be encouraged to employ younger people so that they are less likely to get into drugs etc.	Totnes needs to be sustainable.	Original and unique businesses: handcrafted, handmade. No Chain Stores.
Could expand local sales to other places allowing more money income.	Opportunities for cafes and shops by the Leisure Centre.	Totnes can't satisfy everyone's needs.



**Part of the Accord Group**

Planning for Real Unit  
Innovation Works @ Rubery Owen  
Booth Street  
Darlaston  
West Midlands  
WS10 8JB

Tel: 0121 568 7070

Fax: 0121 526 8088

Email: [info@planningforreal.org.uk](mailto:info@planningforreal.org.uk)

[www.planningforreal.org.uk](http://www.planningforreal.org.uk)

**©Accord 2010**